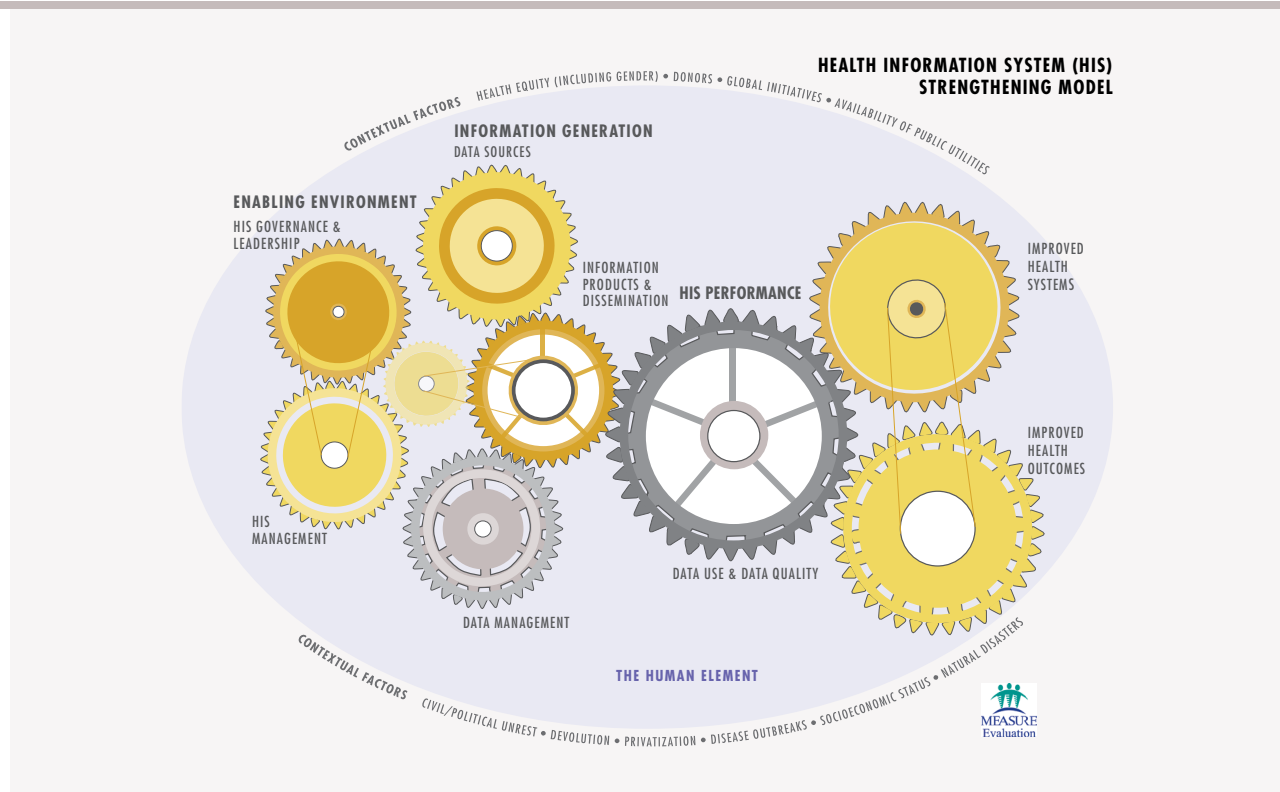


Strengthening Health Information Systems in Botswana

MEASURE Evaluation, funded by the United States Agency for International Development, has been working with Botswana's Gender Affairs Department (GeAD)—housed within the Ministry of Nationality, Immigration, and Gender Affairs—to put in place a referral system to better connect survivors of gender-based violence (GBV) to available services, using a mobile-based referral information system. Before this pilot, a system for capturing or transferring GBV data did not exist. In the absence of such a system, collecting GBV data for planning purposes was difficult, and when GBV survivors sought help, they were forced to provide their information multiples times at different legal, health, and other service points. MEASURE Evaluation's collaborative effort to create and implement the GBV referral system strengthens elements of the health information system (HIS) identified in our Health Information System Strengthening Model (HISSM), shown to the right.

For example, to build an enabling environment for a strong HIS (one of the HISSM's areas), MEASURE Evaluation supported stakeholder coordination to implement the referral system. And we engaged in planning and training, so that ownership and management of the system could shift to local implementing partners (IPs). Touching on another of the model's domains (strengthening capacity to generate information), the new system improves the transfer of data from one point of service to another. To that end, MEASURE Evaluation supported



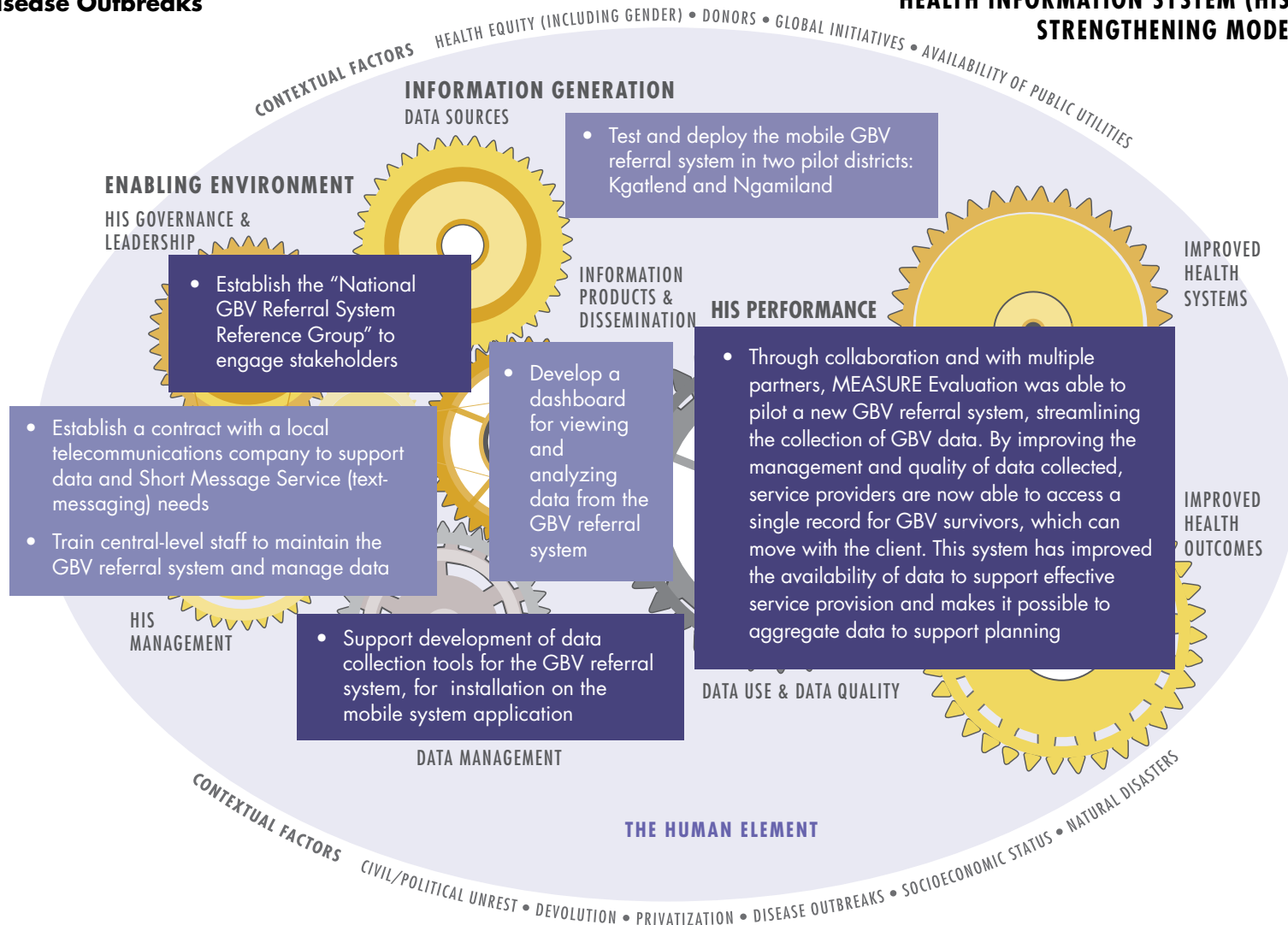
training for providers and data collectors on managing and accessing data in the referral system.

The graphic below depicts MEASURE Evaluation activities in the model's "enabling environment" and "information generation" domains to support the referral system. By displaying interventions across the model, we see their strategic interaction, and how this combination of interventions strengthens data

quality and use at all levels of the health system. The table below the graphic lists additional MEASURE Evaluation activities that support HIS strengthening in Botswana, by the year in which they began. Because of these interventions, we expect to the quality of the data collected to improve and the use of GBV data to generate health indicators, statistics, and trends for data-informed decision making to increase.

MEASURE Evaluation’s Work to Support Better Detection of Disease Outbreaks

HEALTH INFORMATION SYSTEM (HIS) STRENGTHENING MODEL



The table lists additional MEASURE Evaluation activities that support HIS strengthening in Botswana. We expect all of these interventions to improve the quality of the HIS data collected and increase the use of those data to generate health indicators and statistics, identify trends, and expand data-informed decision making. We will update this table in 2018.

MEASURE Evaluation's Other Health Information System Strengthening Work in Botswana				
HISSM areas	HISSM sub-areas (gears)	Health information system strengthening activities		
		2015	2016	2017
Enabling environment	HIS governance and leadership	<ul style="list-style-type: none"> Develop a skills transfer plan outlining the skills and timeline with which MEASURE Evaluation would train and transfer responsibility for data management and server maintenance to the GeAD 		<ul style="list-style-type: none"> Update the skills transfer plan and timeline for the transfer of responsibility for data management and server maintenance to the GeAD
	HIS management		<ul style="list-style-type: none"> Develop a user manual and training guides for the GBV referral system Train GeAD and IP staff from Stepping Stones International (SSI) and Women Against Rape (WAR) staff on the use of the GBV referral system Coach GeAD staff on the use of the referral system dashboard for reporting and analysis 	<ul style="list-style-type: none"> Coach GeAD research staff to use the referral system dashboard to create reports and visualize data Develop a GBV referral system information technology (IT) installation and maintenance manual Coach GeAD IT staff to install and maintain the GBV referral system web application and server
Information generation	Data sources		<ul style="list-style-type: none"> Support IPs, SSI, and WAR to deploy the system in Mochudi and Maun Districts 	
	Information products and dissemination		<ul style="list-style-type: none"> Share aggregate data with IPs on a monthly basis, to improve and inform reporting 	<ul style="list-style-type: none"> Share reports and visuals displaying aggregate data with IPs monthly, to improve and inform reporting
	Data management (collection, transmission, storage, and analysis)		<ul style="list-style-type: none"> Along with IPs, train service providers on the use of the GBV referral system Support IPs to conduct monthly user support meetings and supervision visits 	<ul style="list-style-type: none"> Train service providers on the use of the GBV referral system, in collaboration with GeAD, SSI, and WAR, following mass transfers within the health and social protection sectors Support IPs to conduct monthly user support meetings and supervision visits