

Strengthening Health Information Systems in Bangladesh

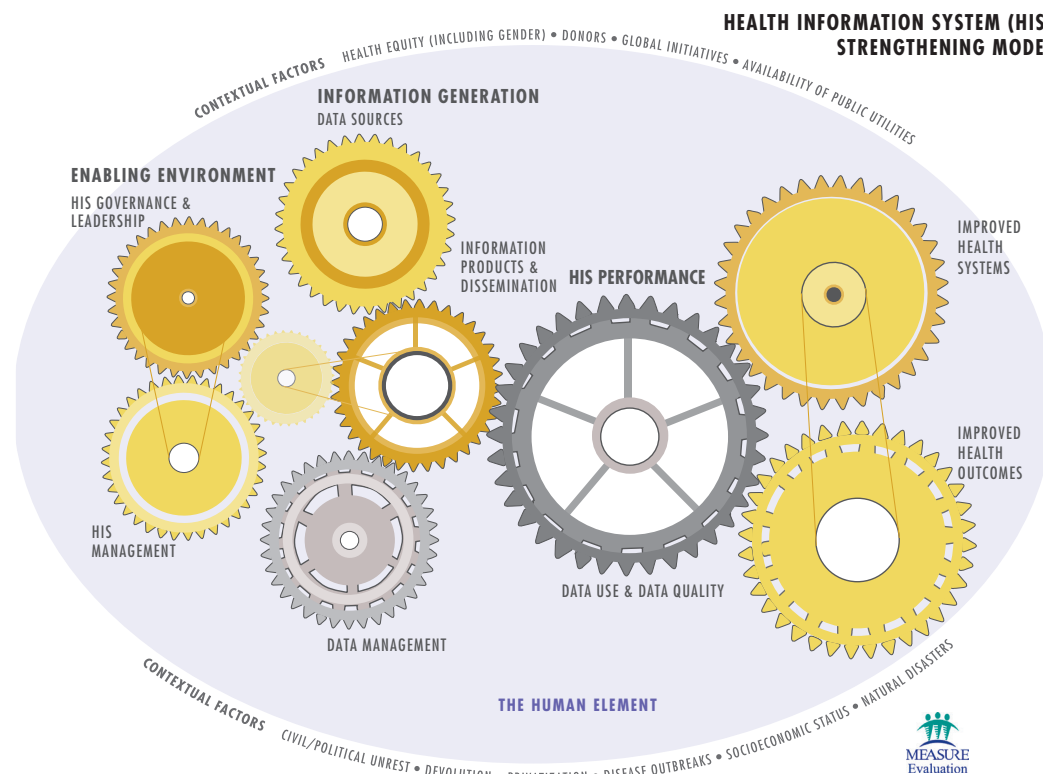
MEASURE Evaluation, funded by the United States Agency for International Development, has been working in Bangladesh since 2010 to help the Program Management and Monitoring Unit (PMMU) at the Ministry of Health and Family Welfare (MOH) improve strategic planning, assessment, and monitoring and evaluation (M&E) of health systems and outcomes. A gap that was identified and addressed in Bangladesh was the lack of systematic population data, especially for rural areas. In order to produce higher-quality data and to support better health-sector planning, MEASURE Evaluation has been working with the International Centre for Diarrheal Disease Research, Bangladesh to help the country's Directorate General of Health Services (DGHS) and the Directorate General of Family Planning (DGFP) strengthen their routine health information system. Much of this work strengthens elements of the health information system (HIS) identified in [MEASURE Evaluation's Health Information System Strengthening Model](#) (HISSM), shown here.

For example, to build an enabling environment for a strong HIS (one area of the HISSM), MEASURE Evaluation supported monthly coordination among stakeholders in the electronic health management information system and introduced digital tablets in select pilot districts to improve data collection in rural areas. To strengthen the system's capacity to generate information (another of the model's areas), MEASURE Evaluation supported the implementation and scale-up of the population registration system and additional DHIS 2 dashboard modules for data collection, such as the death

notification module. This will help health workers collect data, enable easier supervision and review of data for accuracy, and improve overall data quality.

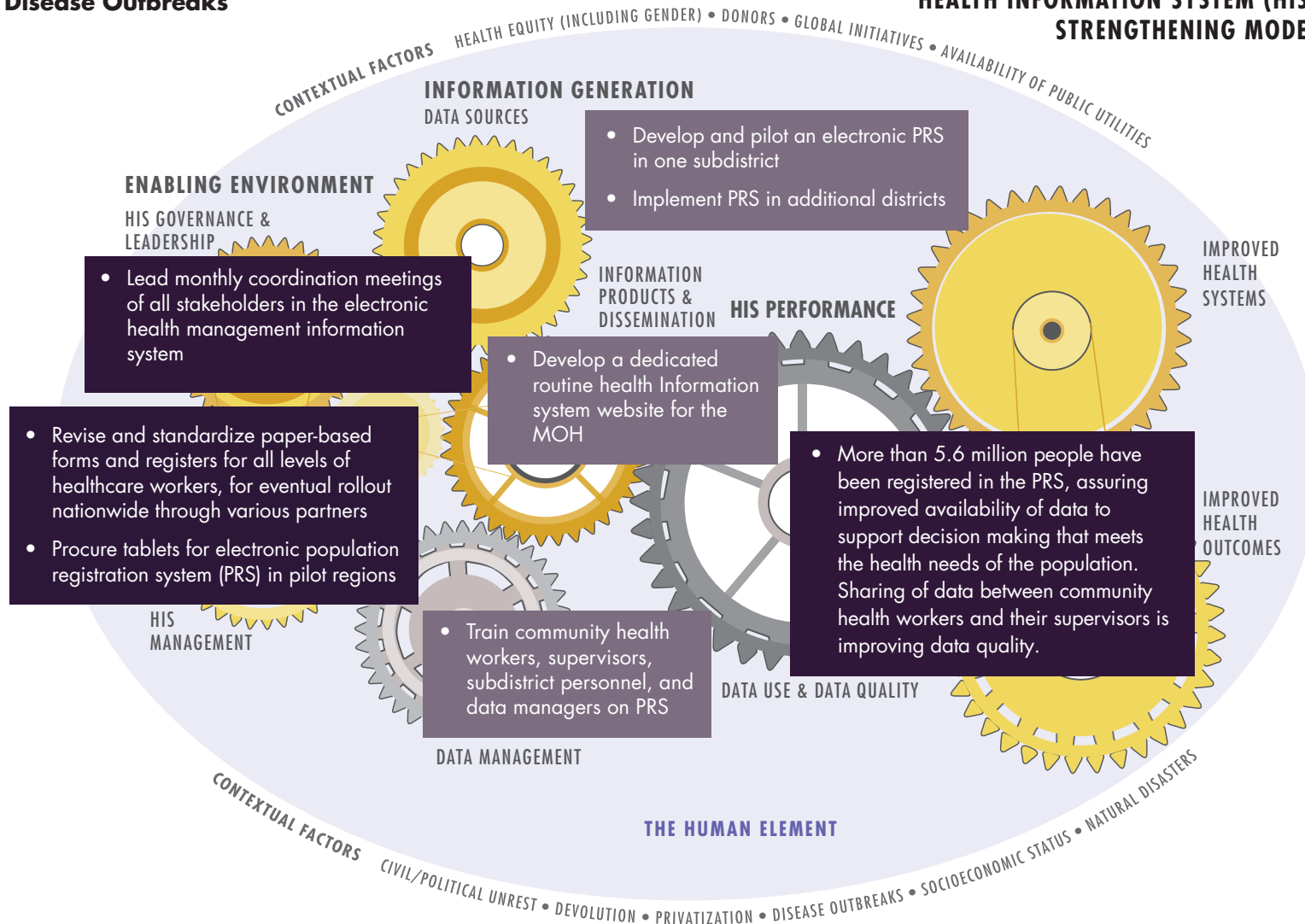
The graphic on the next page depicts MEASURE Evaluation's activities in the model's "enabling environment" and "information generation" areas and support of the HIS. By displaying interventions across the model, we see their strategic interaction and how

this combination of interventions strengthens data quality and data use at all levels of the health system. The table below the graphic lists additional MEASURE Evaluation activities that supported HIS strengthening in Bangladesh. Because of these interventions, the availability and quality of routine health data to support data-informed decision making in Bangladesh has improved.



MEASURE Evaluation’s Work to Support Better Detection of Disease Outbreaks

HEALTH INFORMATION SYSTEM (HIS) STRENGTHENING MODEL



MEASURE Evaluation's Other Health Information System Strengthening Work in Bangladesh						
HISSM areas	HISSM sub-areas (gears)	Health information system strengthening activities				
		2015	2016	2017	2018	2019
Enabling environment	HIS governance and leadership	<ul style="list-style-type: none"> Support the PMMU within the MOH to prepare for the next iteration of health sector-wide development programming, by helping it develop an M&E strategic action plan and program implementation plan 	<ul style="list-style-type: none"> Provide ongoing support for development of an M&E strategic action plan and program implementation plan 	<ul style="list-style-type: none"> Provide ongoing support for development of a monitoring and evaluation strategic action plan and program implementation plan 		
	HIS management	<ul style="list-style-type: none"> Support PMMU to conduct annual program reviews and produce 6-month implementation reports for the health sector-wide development program Provide technical support to the DGFP to transfer online monthly reporting from subdistricts to DHIS 2 in pilot regions 	<ul style="list-style-type: none"> Support PMMU in ongoing program reviews 	<ul style="list-style-type: none"> Support PMMU in ongoing program reviews 	<ul style="list-style-type: none"> Support PMMU in ongoing program reviews Conduct an assessment of DGFP users to identify and address capacity building needs of electronic management information system (eMIS) Support eHealth data standardization and interoperability seminar for DGHS programmers Support transfer of data from eMIS platform to DHIS 2 	<ul style="list-style-type: none"> Support PMMU in ongoing program reviews Develop a capacity building plan for DGFP staff
Information generation	Data sources	<ul style="list-style-type: none"> Introduce DHIS 2 as a common platform for data collection, management, and use 	<ul style="list-style-type: none"> Develop and implement data collection on the following DHIS 2 family welfare modules: eligible couple, maternal and child health, death notification, adolescent, under 5, injectable contraceptive, and family planning stock 		<ul style="list-style-type: none"> Rollout of the electronic systems in 5 additional districts 	<ul style="list-style-type: none"> Rollout of the electronic system to 10 additional districts

MEASURE Evaluation's Other Health Information System Strengthening Work in Bangladesh						
HISSM areas	HISSM sub-areas (gears)	Health information system strengthening activities				
		2015	2016	2017	2018	2019
	Data sources (continued)		<ul style="list-style-type: none"> Develop and implement the electronic supervisory module for family planning inspectors in Tangail District Develop and implement an electronic register for health assistants and electronic supervisory modules for health inspectors in all 12 upazillas of the Tangail District 			
Information generation	Information products and dissemination					<ul style="list-style-type: none"> Support PMMU to redesign progress report format with a new data dashboard and visual indicator display, to improve usefulness of the data for program management
	Data management (collection, transmission, storage, and analysis)		<ul style="list-style-type: none"> Train community health workers, supervisors, subdistrict personnel, and managers on the population registration system in additional subdistrict Train field service providers and supervisors in 7 upazillas on the new family welfare data collection modules Support supervisors of community health worker to conduct regular data quality checks 	<ul style="list-style-type: none"> Train health staff to support DHIS 2 use Train community health workers, supervisors, subdistrict personnel, and managers in the additional five districts Support data quality audits of community-based data on an ongoing basis 	<ul style="list-style-type: none"> Train community health workers, supervisors, subdistrict eMIS personnel, and MIS managers in 4 additional districts, and provide refresher trainings in pilot district 	<ul style="list-style-type: none"> Train community health workers, supervisors, subdistrict MIS personnel, and MIS managers in 10 additional districts