

Strengthening Health Information Systems in Eswatini

From 2011–2019, MEASURE Evaluation, funded by the United States Agency for International Development (USAID), worked with the Strategic Information Department of Eswatini’s Ministry of Health (MOH) to streamline and integrate the parallel health information systems (HIS) for HIV/AIDS, tuberculosis, noncommunicable diseases, sexual and reproductive health, and child health. MEASURE Evaluation provided technical assistance to the MOH’s HIS management unit—through Institute for Health Management, the local, USAID-funded implementing partner—to implement a national electronic health record: the Client Management Information System (CMIS). The goal of the CMIS was to streamline data management processes, improve the availability of high-quality data, and increase the ability of providers and policymakers to address emerging health issues in the country. In addition, MEASURE Evaluation supported the MOH’s monitoring and evaluation unit through the Institute for Health Management to increase the capacity of key stakeholders to analyze, synthesize, communicate, and use data for decision making.

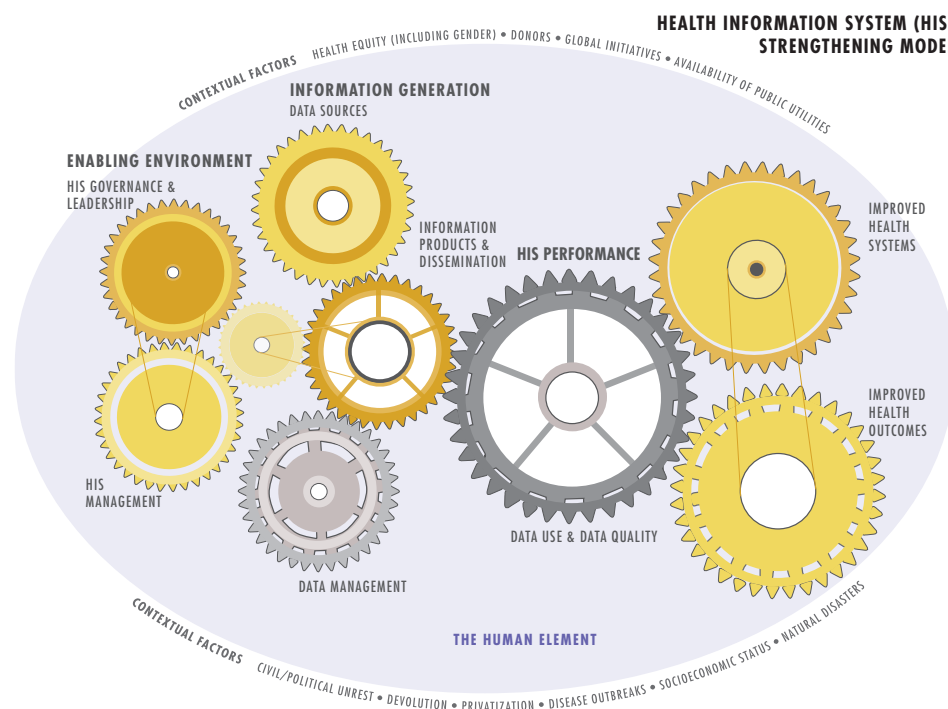
Much of this work with the MOH strengthens elements of the HIS identified in MEASURE Evaluation’s Health Information System Strengthening Model (HISSM), shown in the figure here.

For example, to support an enabling environment for a strong HIS (see the enabling environment area of the HISSM), MEASURE Evaluation convened stakeholders to plan the streamlining of national data collection

and the implementation of the new CMIS. In the information generation area, MEASURE Evaluation supported the piloting and scale-up of the new CMIS, provided training on data quality, and supported the creation of information-sharing products.

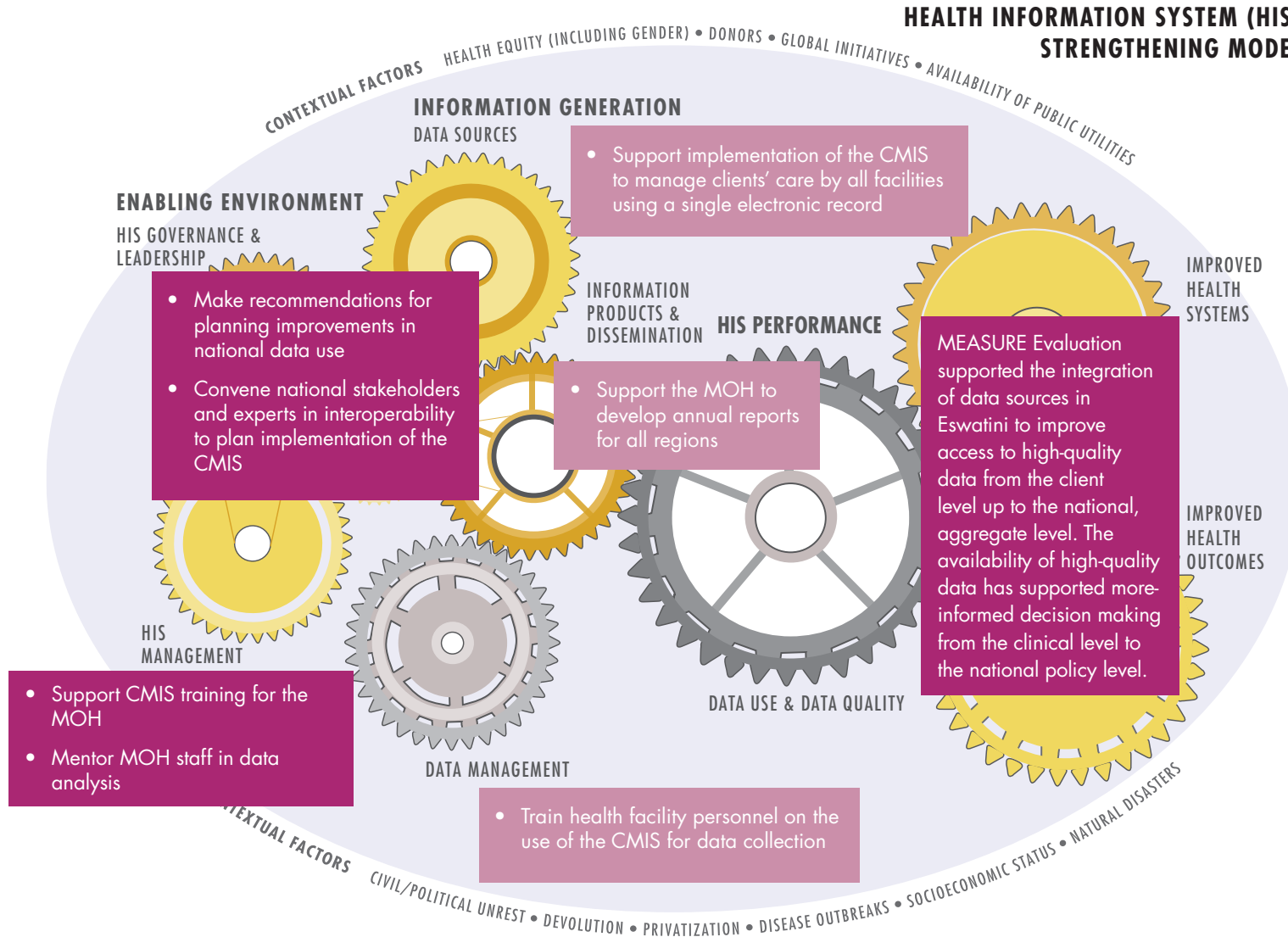
The graphic on the next page superimposes on the HISSM depictions of MEASURE Evaluation’s activities in the enabling environment and information generation areas to support the harmonization of data collection and facilitate the sharing of data. By displaying key

interventions across the model, we see their strategic interaction and how this combination of interventions works together to strengthen data quality and data use at all levels of the health system. The table below the graphic lists additional MEASURE Evaluation activities that support HIS strengthening in Eswatini. As a result of these interventions, we expect to see improvements in the quality of the data collected as well as regular use of routine data to support decision making.



MEASURE Evaluation’s Work to Support a More Unified Health Information System in Eswatini

HEALTH INFORMATION SYSTEM (HIS) STRENGTHENING MODEL



MEASURE Evaluation's Other Health Information System Strengthening Work in Swaziland					
HISSM areas	HISSM subareas (gears)	Health information system strengthening activities			
		2016	2017	2018	2019
Enabling environment	HIS governance and leadership	<ul style="list-style-type: none"> • Convene regional stakeholders in strategic information technical working groups (TWG) • Coordinate national stakeholders to plan for development of a master facility list (MFL) 	<ul style="list-style-type: none"> • Support the national Strategic Information TWG 		
	HIS management	<ul style="list-style-type: none"> • Support CMIS implementation in 15 sites • Train central-level MOH staff in data quality audit management and methods • Conduct training with the MOH to develop standard operating procedures for data governance • Draft guidelines to support the development of an MFL • Review facility lists in existing databases to identify information gaps impeding development of a harmonized MFL • Draft and validate standard operating procedures to guide management of client-level data with stakeholders 		<ul style="list-style-type: none"> • Review CMIS data network architecture and make recommendations for optimal system configuration • Train CMIS help desk support team • Train national-level MOH staff on data demand and use and analysis of routine health data in CMIS • Train CMIS software developers to create data exchange platform between laboratory information system (LIS) and CMIS 	<ul style="list-style-type: none"> • Develop prototype for data exchange platform for LIS and CMIS • Train CMIS software developers to create data exchange platform between LIS and CMIS (follow-up from 2018)

MEASURE Evaluation's Other Health Information System Strengthening Work in Swaziland					
HISSM areas	HISSM subareas (gears)	Health information system strengthening activities			
		2016	2017	2018	2019
Information generation	Data sources	<ul style="list-style-type: none"> Pilot CMIS at three health facilities 			
	Data management	<ul style="list-style-type: none"> Train regional HIS staff in data quality audit methods Conduct national data quality audit in sites that use both paper-based systems and CMIS 	<ul style="list-style-type: none"> Lead national data quality audit in the paper-based HMIS and in CMIS sites 		
	Information products and dissemination	<ul style="list-style-type: none"> Provide support to the MOH for the development of quarterly reports on child health, HIV/AIDS, noncommunicable diseases, and sexual and reproductive health Incorporate CMIS automated system alerts to support health workers in clinical decision making Mentor MOH staff on preparation of information products 			