

1,++++,+++

One Million Community
Health Workers Campaign

Operations Room Map

+++++

Campaign Overview

1,++++,++++
One Million Community
Health Workers

- Focus on CHW scale-up for **MDG achievement** and **Universal Health Coverage**
- Operates in **10 countries** in 2013
- **Phase 1:** MoH develops a **top down** financial and operational plan, which specifies policies, training, deployment and management factors, along with financial envelopes that draw upon global and domestic sources
- **Phase 2:** District-led **bottom up** plan that draws upon implementation partners capable of supporting the MoH and directly participating in scale-up activities



Campaign Structure

1,++++,++++
One Million Community
Health Workers

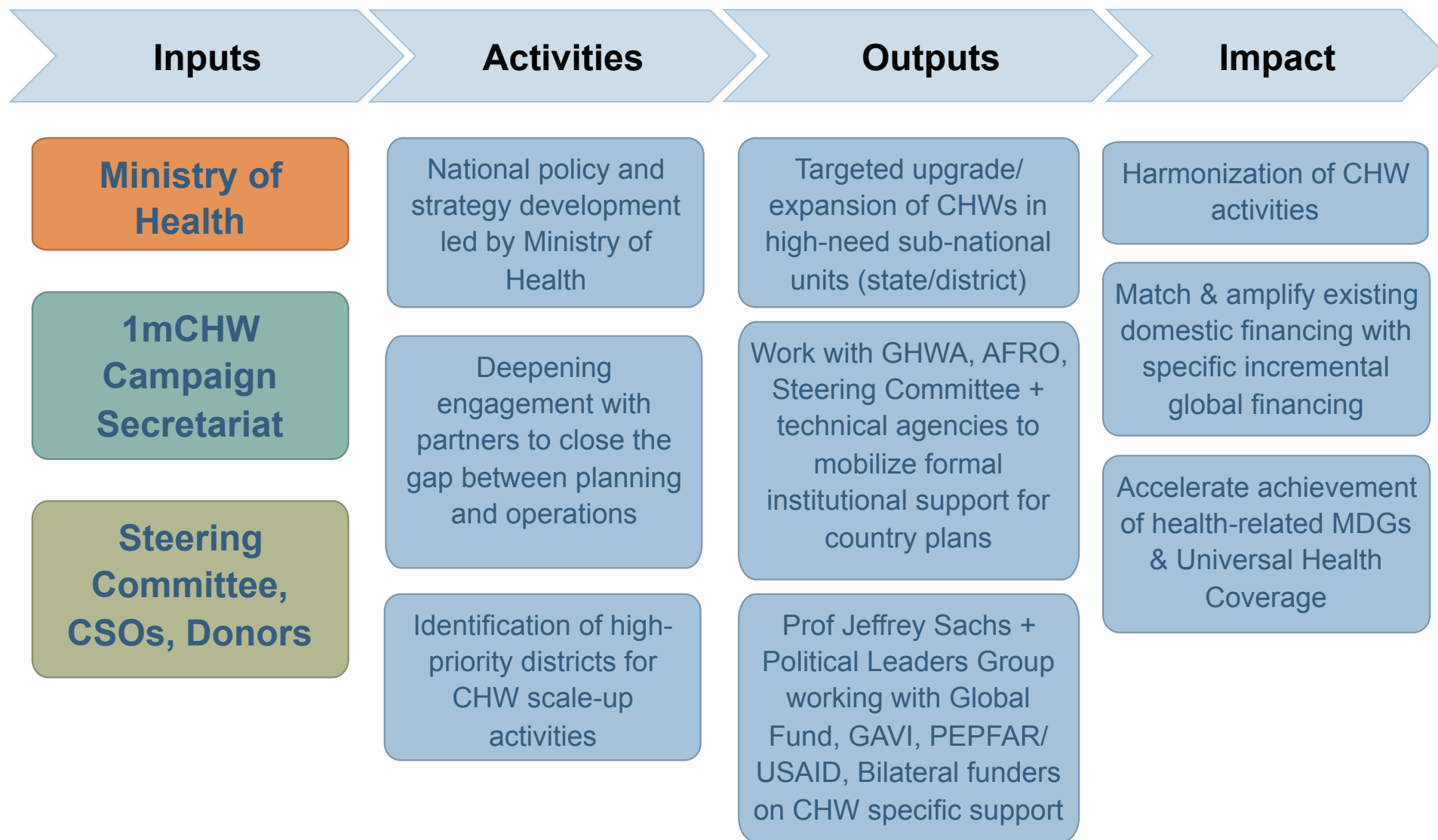


- **Steering Committee:** Comprised of key organizations and experts from UN agencies, academia, private sector, and civil society
- **Secretariat:** Hosted by the Earth Institute of Columbia University (NYC).
 - Collaborates with Global Health Workforce Alliance (GHWA) and World Health Organization (WHO).
 - Conducts outreach to other actors (private sectors, industry leaders, relevant technical experts) to ensure an open and dynamic process.
- **UN Auspices:** Close cooperation across the UN as a demonstration initiative of the SDSN



CHW Scale-up Strategy

1,++++,++++
One Million Community
Health Workers



Maximum MDG Impact: Target Countries

1,+++,++
One Million Community
Health Workers

First Countries:

Comoros

Ghana

Piloting Core Processes

Liberia

Malawi

Nigeria

Senegal

Tanzania

Zanzibar

Newly Engaged Countries:

Burkina Faso

Kenya

Induction to Campaign

Future Countries:

Open to all low-
income countries in
Sub-Saharan Africa

Accelerating Partner Engagement



Progress: Year in review

1,++++,++++
One Million Community
Health Workers

Country Engagement

- First multi-country national CHW planning process workshop held in April 2013 with 8 countries (Comoros, Ghana, Liberia, Malawi, Nigeria, Senegal, Tanzania, Zanzibar) and 50+ participants
- Roadmap development → 4 Completed
- Additional countries (Burkina Faso, Kenya) have joined, or are joining (Benin, Uganda).

Partnerships

- Interacting with and connecting 150+ organizations to CHW operations at local, national and global scale: everyone has a piece of the puzzle, but not everyone has the right relationships.

In-Country Advisory

- Providing on-demand support to partners and MoH for national CHW planning processes.
- Improving core processes for evolution of strategy/implementation support to address the 5-Cs.

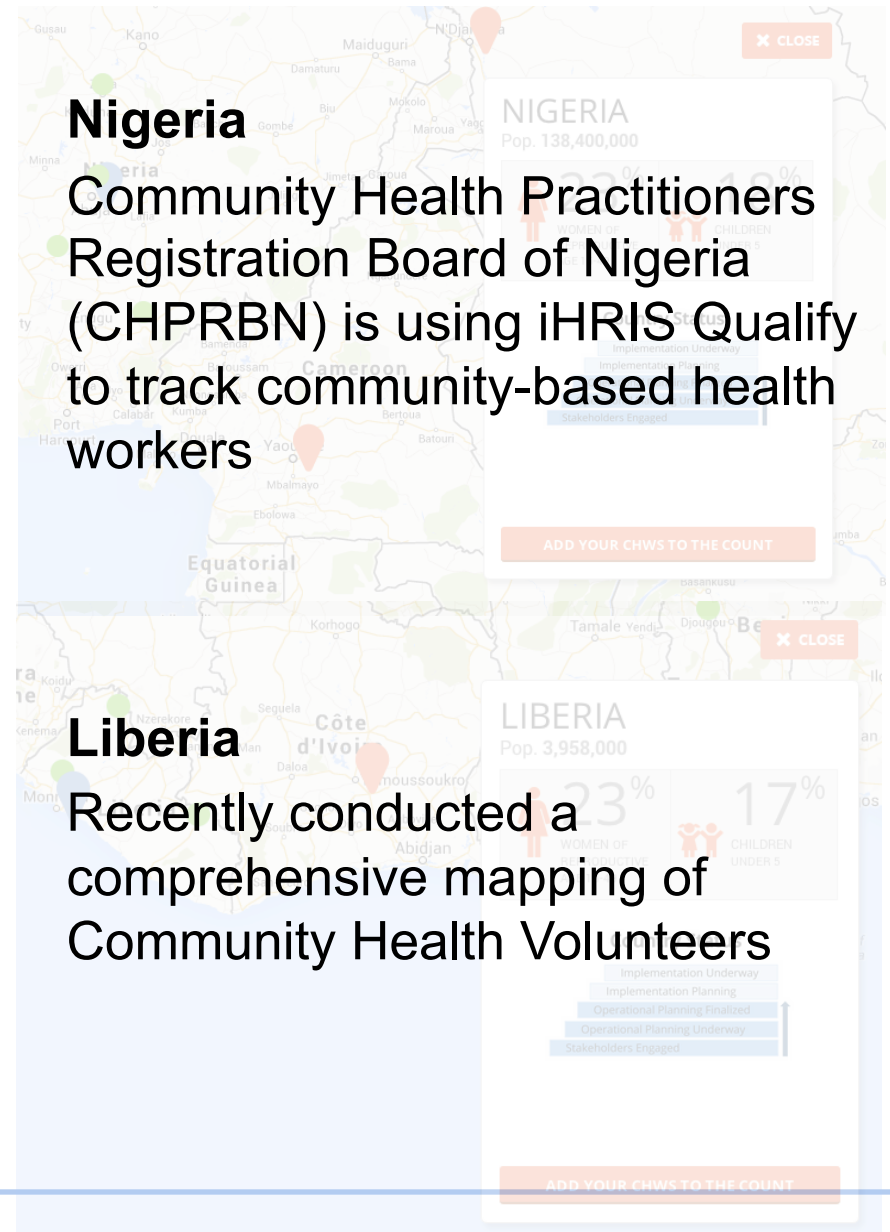
Key Events

- November 2013 – Presentations on Campaign-supported activities at Global HRH Forum
 - December 2013 – mHealth Summit, Technology Council Launch
 - January 2014 – Operations Room Utility Survey Launch
 - March 2014 – CCM Evidence Symposium, Global Stewardship Conference
-

Challenges To CHW Scale-up

1,+++,++
One Million Community
Health Workers

- Lack of systematic way of counting CHWs
#healthworkerscount
- Lack of country-based ownership over collection/reporting mechanism
- Lack of harmonization of stakeholders to actively participate in counting and capability-tracking



CHW Program Registration Form

1,++++,++++
One Million Community
Health Workers

CHW Program Registration Form

Thank you in advance for your contributions to building a dashboard of CHW activities in Africa.

If you are having difficulty submitting this form, an offline version is available for download here:
<http://goo.gl/iGde8e> (Please email the completed form to info@1millionhealthworkers.org)

* Required

Name *

Organization and Affiliations *

Position *

E-mail *

Phone

1. In which country is the CHW program located? *

(Please fill out separate surveys for different programs.) Note: we are only collecting data on sub-Saharan Africa.

2. Where exactly does the CHW program operate? *

Region / District / State (if relevant)




Phase 1

Operations Room

1,++++,++++
One Million Community
Health Workers



HOW TO USE THE MAP

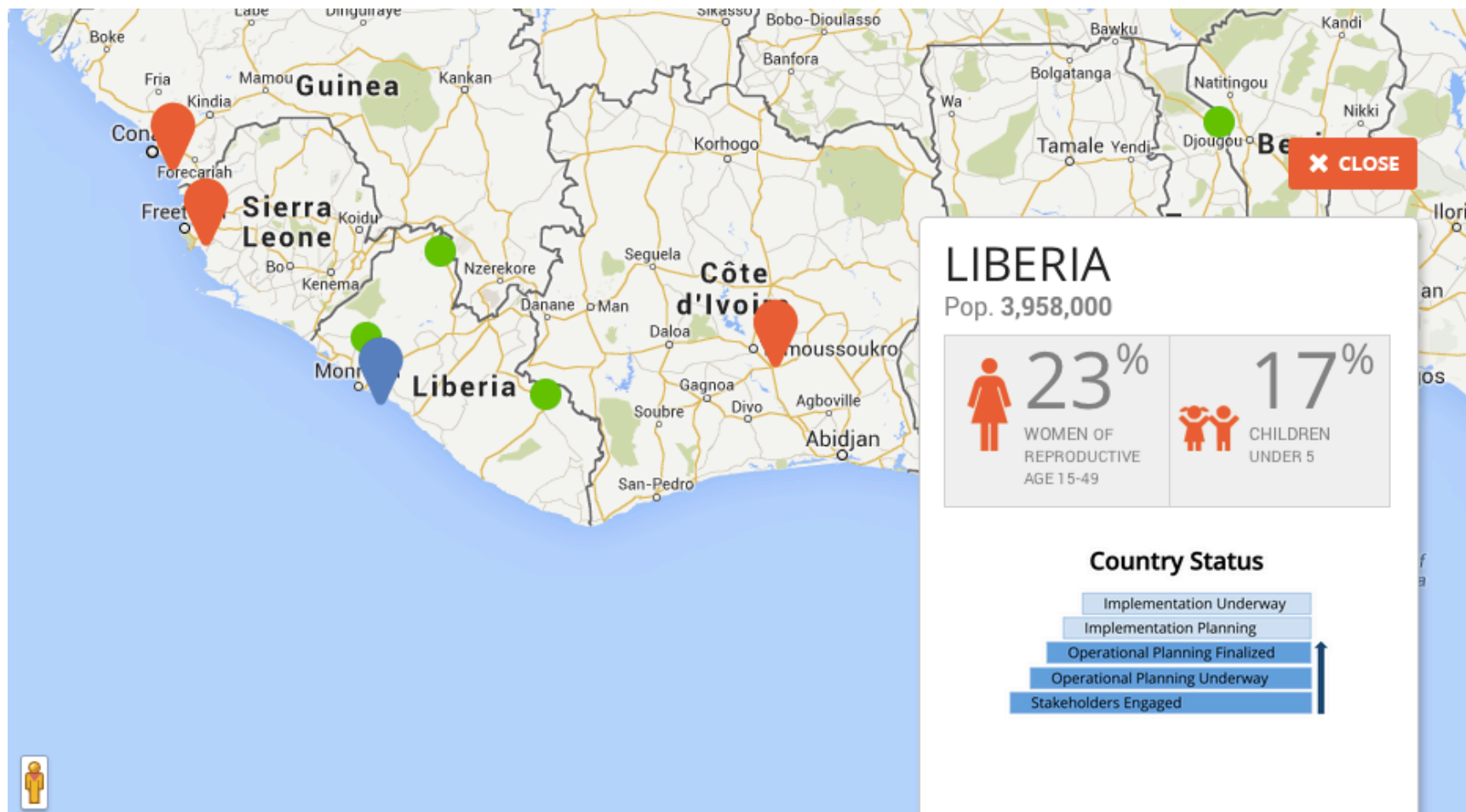
-  JOINED 1mCHW CAMPAIGN
-  TARGET, NOT YET JOINED
-  CSOs WITH REGISTERED CHWs

The 1mCHW Campaign is working to collect data on the numbers, locations, and competencies of Community Health Workers (CHWs) in all of the countries indicated on this map. Blue pins indicate countries that have joined the 1mCHW Campaign, while red pins indicate target countries that have not yet joined. Clicking a pin will give you more information about CHWs and the 1mCHW Campaign in that country and an opportunity to submit information about your organization's CHW program. The countdown to 1 Million Community Health Workers is underway, so start counting your

Operations Room

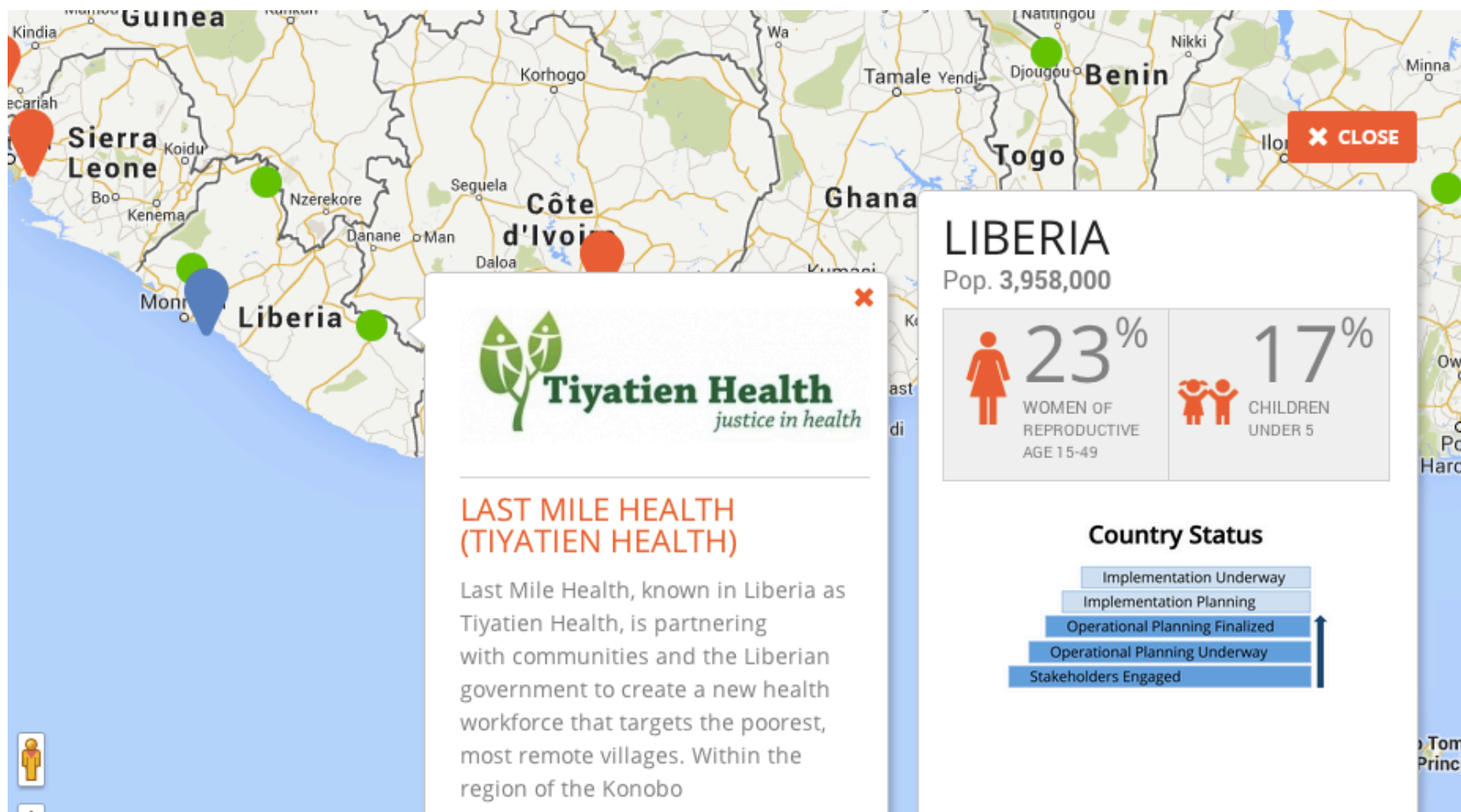
1,++++,++++

One Million Community Health Workers

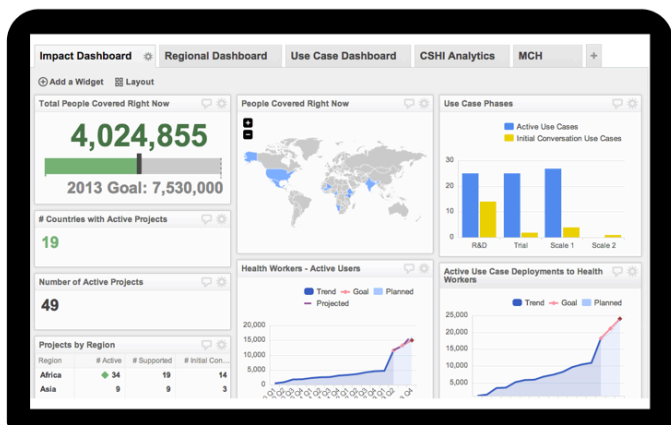


Operations Room

1,++++,++++
One Million Community
Health Workers




Medic Mobile Demo Dashboard



Planned Functionalities

District by District Counting

- District-level counting exercise of CHWs using iHRIS 
- Build Capacity:** Improve capacity of HRH managers to effectively manage CHWs

National HRH Analytics Platform

- National CHW tracking platform for workforce analytics (e.g., # of CHWs, contact info, payment status, training status, etc.)
- Promote Global Standards:** Use WHO Minimum Data Set (MDS) as backbone

Integration with m-/e- Health Systems

- Real-time monitoring of health workforce via mobile phone applications
- Enhance Interoperability:** Aggregate data from mobile systems + existing country m-/e-Health architectures

CHW Observatory

- Close information gaps on CHWs → Research → Good Program/Policy Decisions
- Count CHWs to determine true HRH need → CHW Scale-up → Achieve UHC

Vision

- Allow systematic integration of CHWs into wider health workforce and national HRH framework/health system
- Inform development of global and country level CHW information system platforms, policies and protocols
- Harmonization of efforts among different players

CHW Principles of Practice

Principle 6. Support unified mechanisms for reporting and management of CHW data that promote consistent quality monitoring, supervision and accountability to existing health structures and communities, reinforcing local use of data for decision-making.

Operations Room Utility Survey

1,++++,++++
One Million Community
Health Workers

1millionhealthworkers.org

Operations Room Participation

The 1mCHW Operations Room was built on the realization that there is an increasing need for systematic tracking of CHW operations that is readily available for organizations and nations to use. Although there is key interest by all partners in achieving CHW scale-up, it is a logistical challenge to identify CHW coverage and capacity, the level and quality of training, and the available resources at the district level. The Operations Room will offer a harmonized approach to CHW reporting and establish a clear view of the number of CHWs and their capabilities. In turn, this provides information on where to close the gap on human resources for health (HRH) support so that CHW scale-up can be achieved.

The 1mCHW Campaign is currently working to collect data on the numbers, locations, and competencies of Community Health Workers (CHWs) in Africa, in addition to identifying indicators that can serve as global standards for CHW reporting.

How do you imagine potentially using the Operations Rooms Dashboard within your organization.
(Please select the relative level of importance to your organization of each function.)

	Very Important	Somewhat Important	Not Important
Research CHW activities and operations	<input type="radio"/>	<input type="radio"/>	<input type="radio"/>
Sharing of CHW materials and best practices with external partners	<input type="radio"/>	<input type="radio"/>	<input type="radio"/>
Understand the activities of other organizations	<input type="radio"/>	<input type="radio"/>	<input type="radio"/>
Encourage involvement from other non-profits and/or health providers in CHW operations	<input type="radio"/>	<input type="radio"/>	<input type="radio"/>
Understand your organization's work in the context of others' CHW operations	<input type="radio"/>	<input type="radio"/>	<input type="radio"/>

Phase 2

Thank You

1,+++ ,+++
One Million Community
Health Workers

1millionhealthworkers.org/operations-room-map/

For questions about the Operations Room, please contact:

Ms. Sharon Kim
sjkim@ei.columbia.edu

1,000,000

Health Workers



by 2015

Information Sources

*District, County, Local
Governing Authority*

Registration
System

*Accredited Training
Institute*

E-Learning /
m-Learning
Systems

*Community-Based
Information System*

Point of care data
collection systems

Operations Room

Registry

name, village,
education level,
salary

Training Level

competencies,
scores, strengths,
weaknesses

Performance Metrics

coverage, quality,
client satisfaction

Community Health Workforce Management Dashboard

Governing Processes:

1. Individual CHW performance tracking
2. Aggregate performance tracking
3. Coverage tracking
4. Service tracking
5. Competency tracking

Management and Policy Decision Points:

Training
and task-
shifting

Hiring/
Firing

Supervision

How to pull from existing registries?

How to pull existing information systems onto one platform?

Information Sources

District, County, Local Governing Authority

Registration System

Accredited Training Institute

E-Learning / m-Learning Systems

Community-Based Information System

Point of care data collection systems

Operations Room

Registry
name, village,
education level,
salary

Training Level
competencies,
scores, strengths,
weaknesses

Performance Metrics
coverage, quality,
client satisfaction

Community Health Workforce Management Dashboard

Governing Processes:

1. Individual CHW performance tracking
2. Aggregate performance tracking
3. Coverage tracking
4. Service tracking
5. Competency tracking

Management and Policy Decision Points:

Training and task-shifting

Hiring/
Firing

Supervision

How to pull health outcome information into national health information systems?

What does the reporting dashboard look like?

Zoom in on these use cases and draw out some steps?

How to link to multiple financing and forecasting systems?