

Improving access to maternal healthcare through mHealth: Program scale-up to the Tambacounda region, Senegal

WAHA International

CHEIKH MBAYE





1.

- **Lack of patient transport to reach the available services**







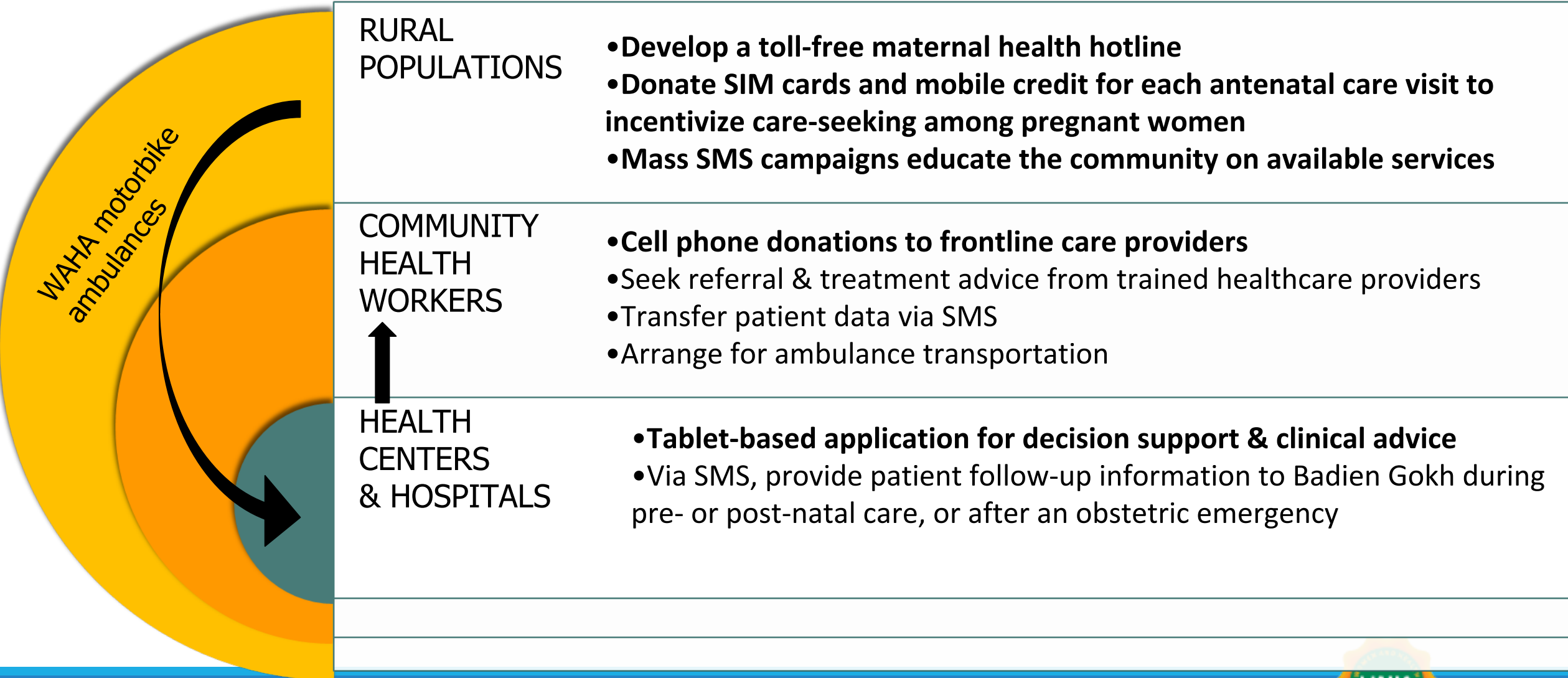


2.

- **Ineffective communication links between health workers to facilitate emergency transfers and subsequent management of more complex cases.**



HEALTH TECHNOLOGY IN WAHA'S COMPREHENSIVE REFERRAL NETWORK



3.

- **A lack of information and education at the community level regarding the availability and benefits of the local health services;**





Badienou Gokh connected strategy

Involves the community in the fight against maternal and neonatal mortality and morbidity.

An important strategy aiming to reinforce existing community participation in the fight against maternal and neonatal mortality.

This initiative from the Ministry of Health uses women's leadership in each community with the goal of pooling resources from all the partners supporting community health





Call Centre



Toll Free Number





RM TAMBA

Liste des messages archivés

1 à 20 sur 47



<input type="checkbox"/>	Date	Objet	Message	Statut
<input type="checkbox"/>	 06/05/2015 10:06:15	NUTRIMENT (FER ET ACIDE FOLIQUE)	Fatigue, maux de tête, étourdissements? Vous êtes peut être en manque de fer. Souvenez vous de prendre vos comprimé de fer d'acide folique quotidiennement.	[Statuts de l'envoi]
<input type="checkbox"/>	 06/05/2015 10:11:11	NUTRIMENT (FER ET ACIDE FOLIQUE)	Fatigue, maux de tête, étourdissements? Vous êtes peut être en manque de fer. Souvenez vous de prendre vos comprimé de fer d'acide folique quotidiennement.	[Statuts de l'envoi]
<input type="checkbox"/>	 06/05/2015 10:16:02	paludisme (traitement preventif intermittent)	Vous devez prendre votre médicament (SP) pour prévenir le paludisme et protéger votre bébé.	[Statuts de l'envoi]

Pilot Results

- The proportion of births with skilled attendance in a health facility increased from 20% to 43%
- The proportion of pregnant women that received at least one ANC visit during pregnancy increased from 20% to 90%.
- The proportion of neonates that received intensive neonatal care increased from 2% to 8%.
- The number of times that the motorbike ambulance was called out increased by 60%.



Further Developments

- **Pilot project in Kédougou, Senegal: 2010 – 2013**
- **Scale-up to Tambacounda, Senegal: 2014 – 2016, achieving full sustainability after 2 years**
- **Generalize in all Senegal regions at end of 2018**
- **Our strong partnership with the ministries of health will ensure sustainability of the program in addition to what we are building with MNOs**



To be Continued

- **We need continued support from the Ministries of Health to ensure skilled healthcare and resources are available and accessible for women and children.**
- **WAHA seeks partners with a similar mission who support a community-centered approach.**
- **An investment in a WAHA project is an investment in the communities we serve.**





Thank you!

- Cheikh Mbaye
- WAHA International
- www.waha-international.org
- Cheikh.mbaye@waha-international.org

