

The Digital Health Atlas for national mHealth inventory, to assess and facilitate scale of deployments

Dr. Garrett Mehl, Scientist



www.digitalhealthatlas.org

Welcome!

This Digital Health Atlas aims to strengthen the value and impact of digital health investments, improve coordination, and facilitate institutionalization and scale.

🔍 Type and search project...

What's DHA?

Sign up

Whether you are an implementer, government, or financial investor, sign up below.

1. SELECT YOUR ROLE

?

⋮

Digital Health Atlas

- Global web-platform to curate digital health implementations, supporting **Ministries of Health**, **technologists** and **implementers** to map, monitor, and foster digital health innovations investments to meet Government health goals





Digital Health Atlas

- Supports digital health **coordination**, documentation, and planning
- Addresses country and implementer unfamiliarity with other technologies that are already being used locally, which could be **adapted and reused**
- Provides projects with appropriate **assessment frameworks** and tools to assess project potential for scale, to guide investments and strategic planning
- Documents orphaned and abandoned **technology investments** when projects end or funding stops

Welcome!

This Digital Health Atlas aims to strengthen the value and impact of digital health investments, improve coordination, and facilitate institutionalization and scale.

 Search projects

My Projects

WorldVision: Community Management Mobile and Health Data System (Sierra Leone)

 DASHBOARD

 UPDATE

 SUMMARY

What's DHA?



Digital Health Atlas offers technologists, implementers, financial investors, and governments a platform of tools and guidance to improve the use of digital innovations for health.

Current Primary Use Cases

- National Level Inventory of Digital Health investments
- Digital Health Project Managers aiming to improve potential to scale

COUNTRY LEVEL VIEW

MAP VIEW

LIST VIEW

Sierra Leone



Area name #1234

[Helen Keller International](#)
Routine nutrition monitoring

[eHealth Africa](#)
SENSE contact tracing

[GOAL International](#)
SENSE contact tracing

23 projects
Click on district to show all!

How to use this map?

Hover on districts shows list the list of active projects in an area.

Click on a district to enlarge and browse the list of projects.



Details of Digital Investments in country

The screenshot shows the Digital Health Atlas web application interface. The browser address bar displays `digitalhealthatlas.org/app/5/country`. The application header includes the logo, a dashboard menu, and a 'NEW PROJECT' button. The main content area is titled 'COUNTRY LEVEL VIEW' and features a 'LIST VIEW' tab. A dropdown menu is set to 'Sierra-Leone'. A summary box on the right indicates 'Number of Projects in sierra leone' is 3. Below this, a list of filters for the map is shown: Continuum (7), Interventions (40), Technology Platforms (35), Applications (32), and Constraints (7). The main table lists three projects, each with a star icon, project name, links to 'Project Dashboard' and 'Visualize Project', country, organization, donors, point of contact, and overview.

Project name	Country	Organisation name	Donors	Point of Contact	Overview implemen
★ WorldVision: Community Management Mobile and Health Data System Project Dashboard Visualize Project	Sierra-Leone	SL HIS	WV Ireland / WV UK	AUGUSTINE BOCKARIE TRYE, Augustine_Trye@wvi.org	Register lactating followup provide c /visuals t counsell
★ HKI: Routine supervision related to family planning and nutrition Project Dashboard Visualize Project	Sierra-Leone	SL HIS	Partners in Health	Katrina Hahn, katrinehann@email.com	To decre between analysis providing out form defaultin effective strengthen the commun relations
★ Routine supervision related to family planning and nutrition Project Dashboard Visualize Project	Sierra-Leone	SL HIS	HKI	Mery Hodges, digitalhealthuser@gmail.com	Digitiz forms Food a part of superv

Filter Investments by Types

MAP VIEW

LIST VIEW

Sierra-Leone ▼

Number of Projects in sierra-leone

3

Digital health intervention	Implementing partners	Geographical coverage	mHealth interventions
<p>Pregnant women and mothers, allows visit by CHWs, and text messages that CHWs can use when visiting clients.</p>	<p>MoHS, Health for all coalition and DHMT</p>		<p>Primary Care, Maternal Health</p>
<p>Supports data entry and time for data collection and guides CHWs in providing better care and filling forms correctly To identify patients more quickly and more efficiently To support facility and community-based programs</p>	<p>Wellbody Alliance, Directorate of Primary Health</p>		<p>Tuberculosis, HIV/AIDS</p>
<p>Supports a portion of the routine immunization by the Directorate of Health and Nutrition and RCH as part of a program on supportive supervision.</p>	<p>Directorate of Food and Nutrition; Directorate of RCH</p>		<p>Primary Care, Maternal health, Nutrition/Food Security</p>

Apply filters to map:

^

Continuum (7)

☐ Detection and diagnosis
 ☐ Follow and retention to care
 ☐ Health promotion and intervention
 ☐ Identify target populations
 ☐ Linkage to care & Coordination
 ☐ Management and quality of Care
 ☐ Reporting and Planning

▼

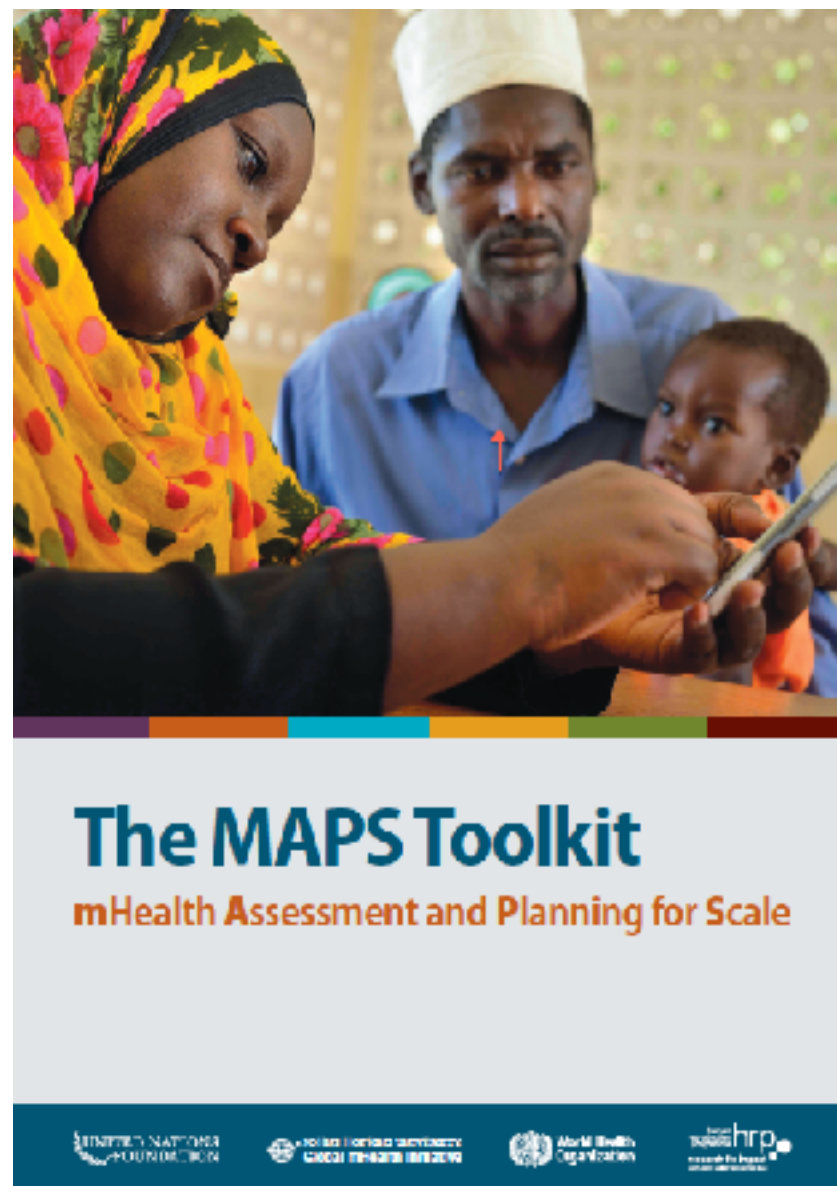
Interventions (40)

^

Technology Platforms (35)

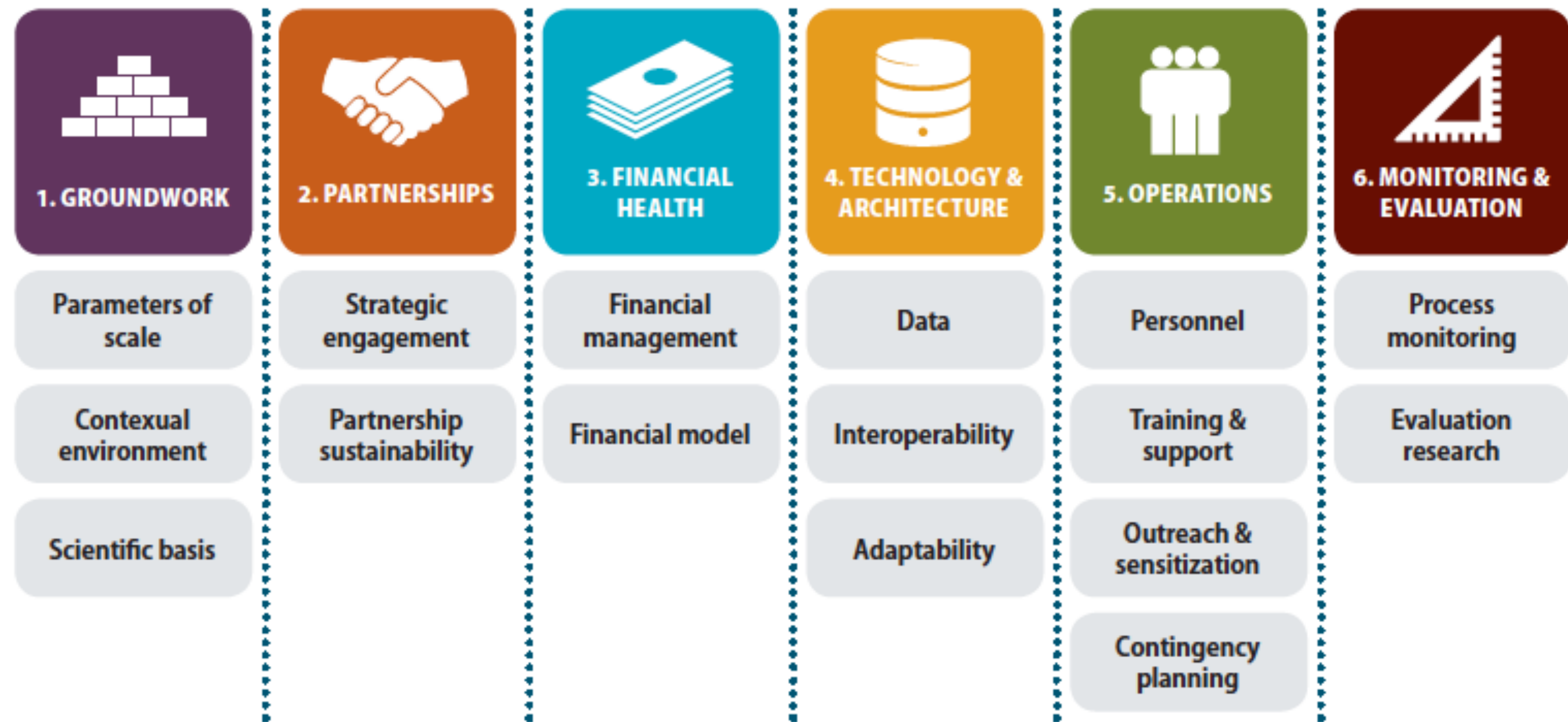
☐ Adobe Forms
 ☐ Bamboo
 ☐ Capatricy
 ☐ Commcare
 ☐ Crowd Map
 ☐ Data Winners
 ☐ DHIS2
 ☐ emocha

mHealth Assessment and Planning for Scale (MAPS) toolkit for Maturity Assessment



- MAPS provides **actionable information** to improve mHealth projects' capacity to scale up
- Informed by WHO, UN IWG Catalytic Grant Mechanism for mHealth projects
- MAPS has **two main goals**:
 1. Assess Maturity
 2. Plan

Axes of scale with corresponding domains

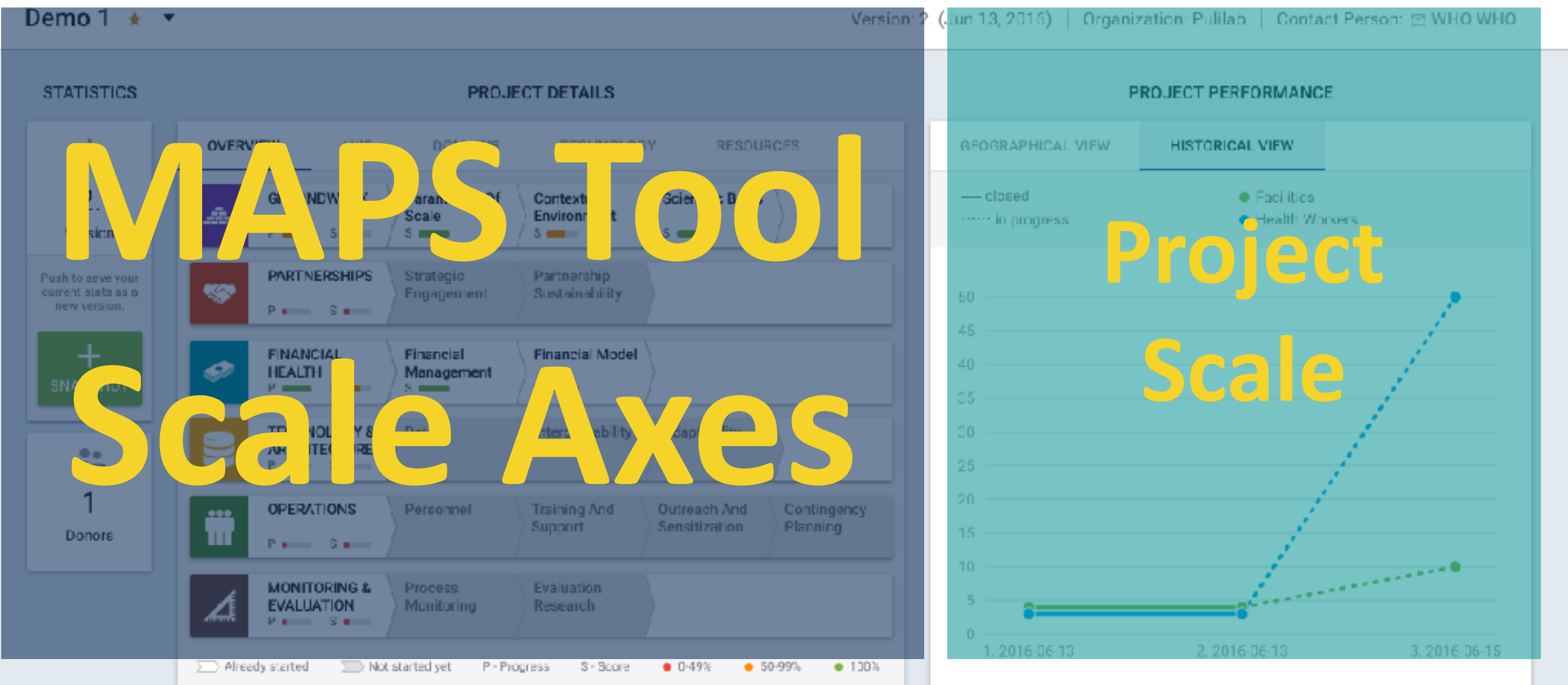


14-1. Have procedures been developed for addressing infrastructural constraints? (9 points)

	NO	IN PROGRESS	PERFORMED	DOCUMENTED	POINTS EARNED
i) Procedures for addressing lack of/ inconsistencies in connectivity have been established (e.g. provision of several SIM cards so health workers can use different networks when necessary)	0	1	2	3	1
ii) Procedures for addressing lack of/ inconsistencies in electricity have been established (e.g. provision of solar chargers, setting up charging stations in communities)	0	1	2	3	1
iii) Information regarding these strategies is included within the standard operating procedures/job aids provided to end-users and secondary users	0	1	2	3	2
Total points earned (out of a possible 9)					4

Use the guidelines given in Table 1 to select the most appropriate response. In this example the team has selected "In progress" for questions (i) and (ii); and "Performed" for question (iii).

Write the appropriate points value in the "Points earned" column. Then add up your total and write it in the "Total points earned" box.



STATISTICS



2.

Version

Push to save your current stats as a new version.



SNAPSHOT



1

Donors

PROJECT DETAILS

OVERVIEW

AXIS

DOMAINS

TECHNOLOGY

RESOURCES

	GROUNDWORK P S	Parameters Of Scale S	Contextual Environment S	Scientific Basis S	
	PARTNERSHIPS P S	Strategic Engagement	Partnership Sustainability		
	FINANCIAL HEALTH P S	Financial Management S	Financial Model S		
	TECHNOLOGY & ARCHITECTURE P S	Data	Interoperability	Adaptability	
	OPERATIONS P S	Personnel	Training And Support	Outreach And Sensitization	Contingency Planning
	MONITORING & EVALUATION P S	Process Monitoring	Evaluation Research		

Already started
 Not started yet
 P - Progress
 S - Score
 0-49%
 50-99%
 100%

PROJECT PERFORMANCE

GEOGRAPHICAL VIEW

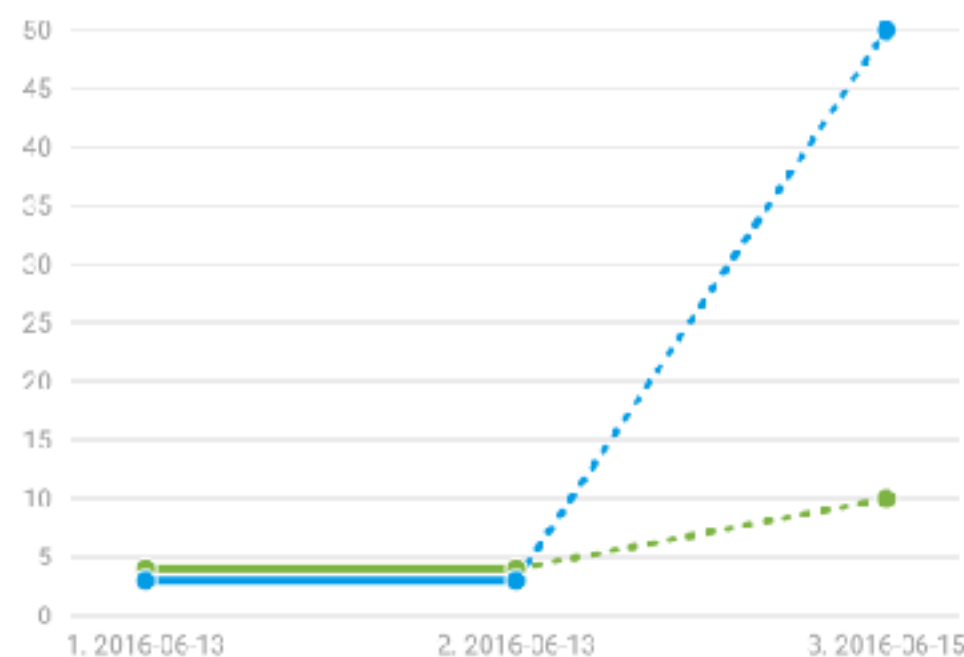
HISTORICAL VIEW

— closed

..... in progress

● Facilities

● Health Workers



DigitalHealthforEveryone ★ ▼

UUID
S70815b66ax8

VERSION
5. (Nov 28, 2016)

ORGANIZATION
DigitalHealth Enthusiasts Inc

CONTACT PERSON
Alpha Implementer [EMAIL](#)



TECHNOLOGY & ARCHITECTURE

P

Data

S

Interoperability

S

Adaptability

S

[SCORECARD](#)

[OVERVIEW](#)

DOMAIN 8: DATA (43 points)

[VIEW INSTRUCTIONS](#)

Efforts to ensure that a number of elements of the mHealth technology and system are appropriate to data needs throughout all stages of the scaling-up process, including access, transmission, storage and security

8-1.Does the application have features that aim to improve data accessibility and quality? (9 Points)

	NO	YES	DOCUMENTED	POINTS EARNED
i) The application includes data quality assurance measures, such as validation rules and logic checks, to reduce data entry errors and increase accuracy	<input type="checkbox"/>	<input checked="" type="checkbox"/>	<input type="checkbox"/>	1 points
ii) A user-appropriate dashboard allows the data to be accessed and monitored in real time	<input type="checkbox"/>	<input checked="" type="checkbox"/>	<input type="checkbox"/>	1 points
iii) There is a process in place for extracting and exporting the data that are appropriate to				

GROUNDWORK

PARTNERSHIPS

FINANCIAL HEALTH

AXIS 4
TECHNOLOGY & ARCHITECTURE

OPERATIONS

MONITORING & EVALUATION



AXIS 3. FINANCIAL HEALTH

Scorecard

DOMAIN 6: FINANCIAL MANAGEMENT (45 points)

[≡ UPDATE SCORE](#)[? SHOW HELP](#)

SAQ 6-1 Is there a solid understanding of the costs, from a programme perspective, to execute the project at its current scale? 16 / 18 points

SAQ 6-2 Is there a solid understanding of the cost (if any) to the end-user or programme beneficiaries? 4 / 6 points

SAQ 6-3 Is there a solid understanding of the cost (if any) to the health system? 4 / 9 points

SAQ 6-4 Have the potential economic costs for scaling up the mHealth project been forecasted? 8 / 12 points

Domain total 32 / 45 points

Domain percentage (Domain total divided by 45, then multiplied by 100) 71%

DOMAIN 7: FINANCIAL MODEL (36 points)

[≡ UPDATE SCORE](#)[? SHOW HELP](#)

SAQ 7-1 Has the value that the mHealth product delivers to stakeholders, as compared to existing alternatives, been demonstrated? 5 / 12 points

SAQ 7-2 Has a comprehensive and logical business plan been developed to guide project operations and resource mobilization? 8 / 12 points

SAQ 7-3 Have strategic choices been made regarding partners who offer sustainable funding for scaling up? 6 / 12 points

Domain total 19 / 36 points

Domain percentage (Domain total divided by 36, then multiplied by 100) 53%

mHealth for RMNCH Programme (Sierra Leone) ▼

Version 3 (

STATISTICS

3.

Version

+ SNAPSHOT



1509

Viewers



87

Followers



3

PROJECT DETAILS

OVERVIEW

AXIS

DOMAINS

TECHNOLOGY

RESOURCES

— closed

---- in progress

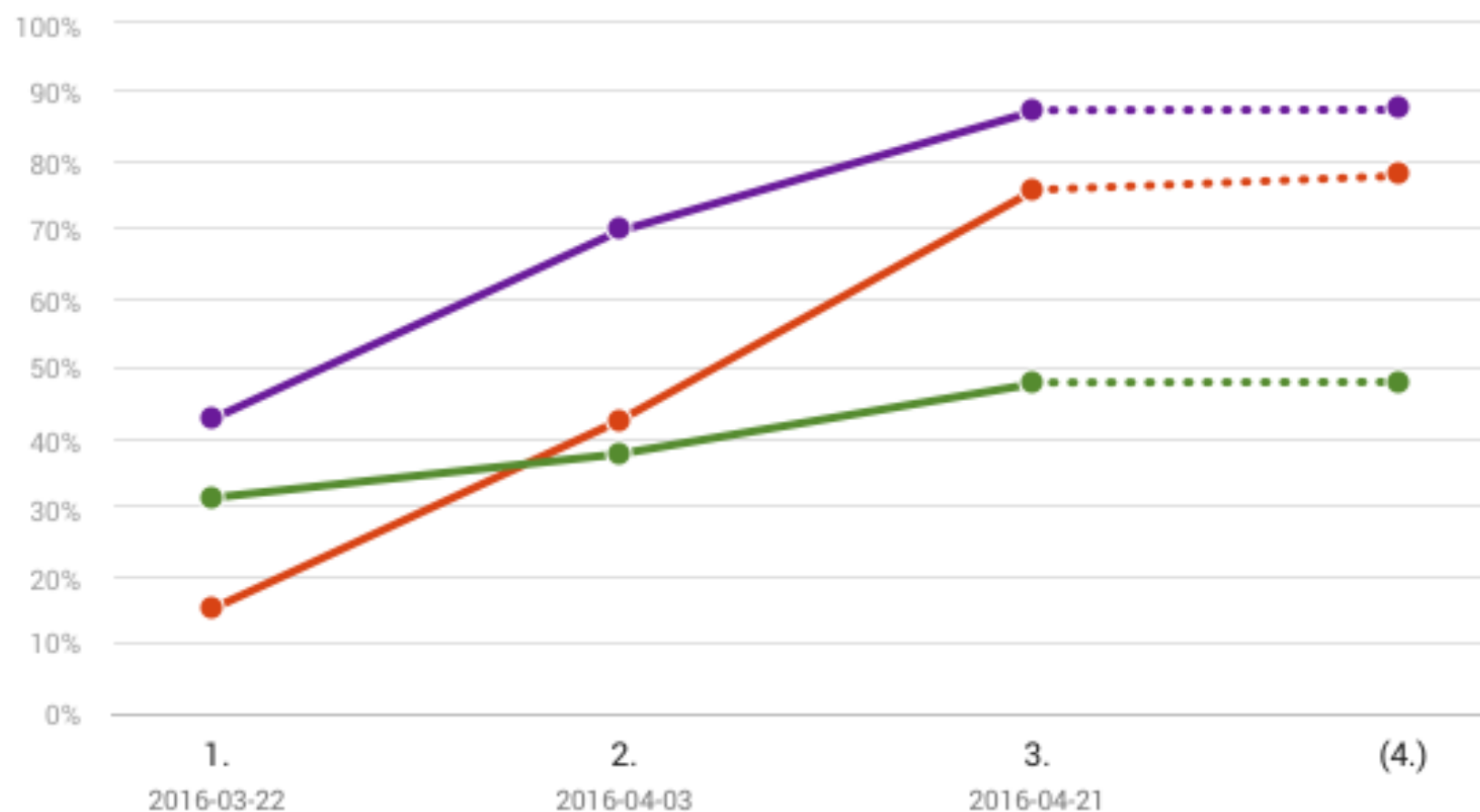
● Parameters of scale

● Contextual environm...

● Scientific basis

Axis to show:

Groundwork ▼





Digital Health Atlas

- Supports: governments, donors, and implementing partners to manage information about digital solution investments, trends.
- It facilitates reuse, co-investment and collaboration, to support interoperability and technology standards, and discourage re-invention and siloed investments into technologies.
- A Health Data Collaborative Product supported by WHO, HRP, USAID, UN Foundation, PATH, JHU-GMI, and mPowering Frontline Workers.

www.digitalhealthatlas.org

Thank you

Dr. Garrett Mehl
Scientist, Digital Innovation
Department of RHR,
WHO, Switzerland
mehlg@who.int

