



# The Sum of it's Parts: Integrated Disease Surveillance and Response - the Story of Liberia's Growing Health Information System

**Luke Bawo**, Ministry of Health Liberia

**Jaclyn Carlsen**, USAID Global  
Development Lab

**Stephen Gbanyan**, Ministry of Health  
Liberia

**Leah McManus**, IntraHealth International

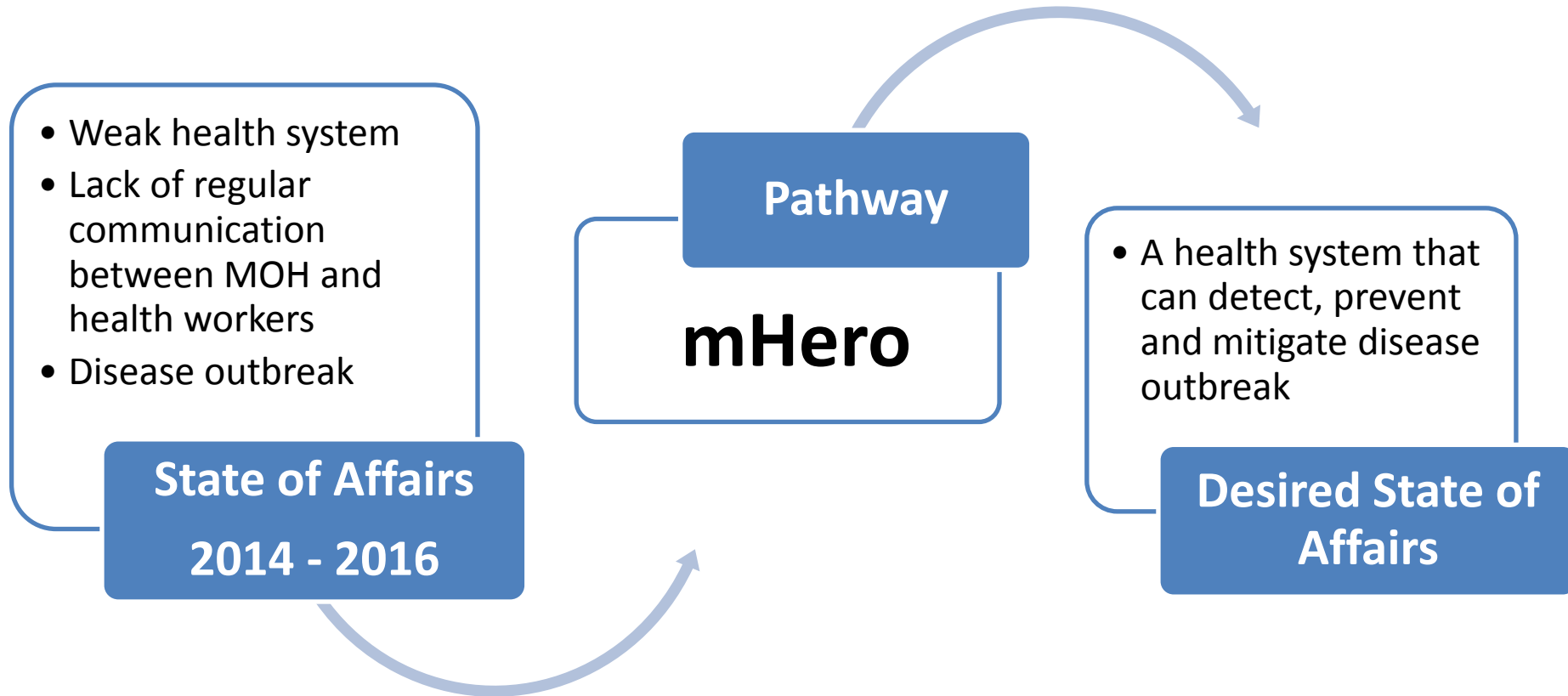
**Emily Nicholson**, IntraHealth International

**Ally Shaban**, IntraHealth International

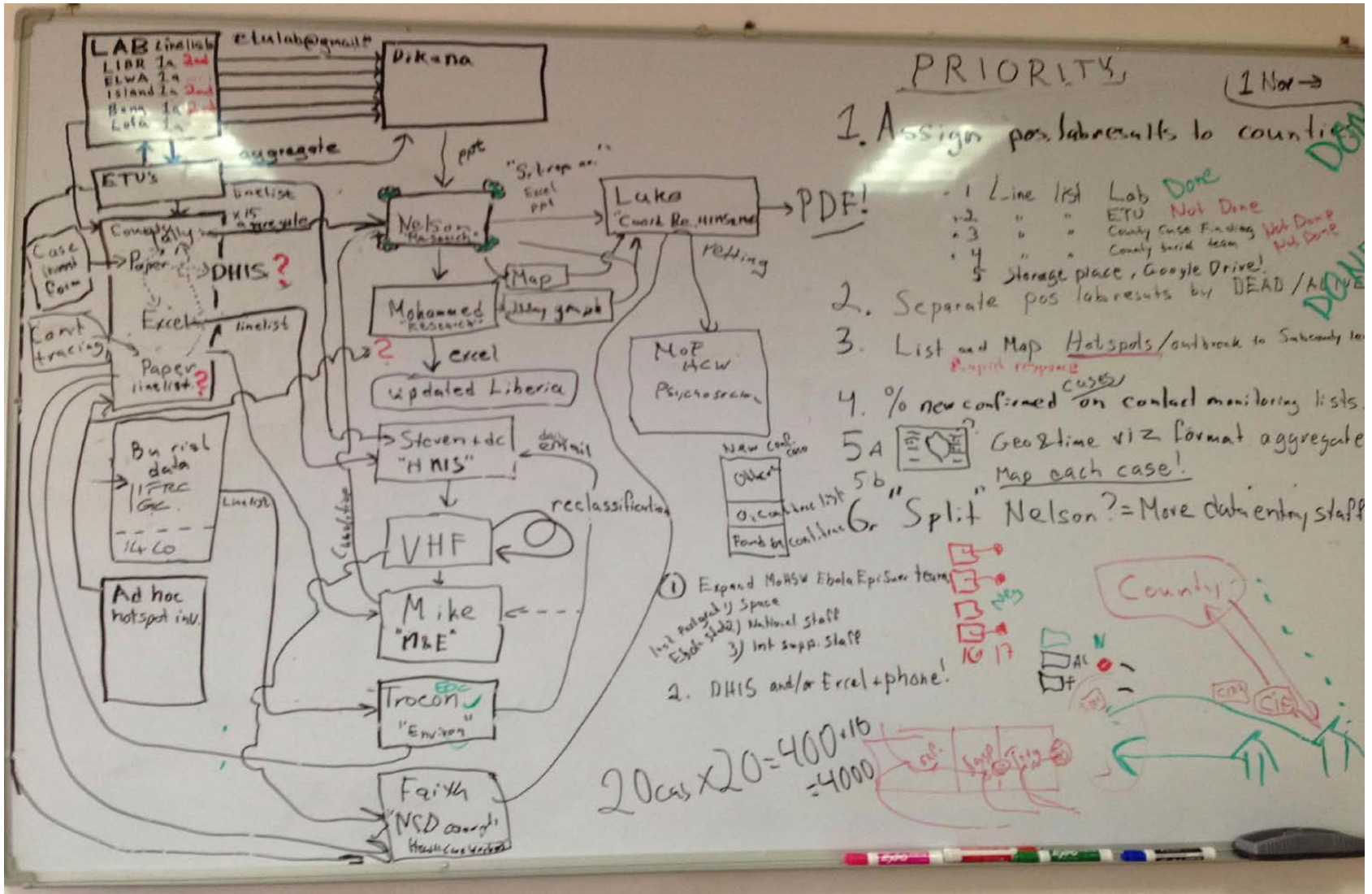


# The Problem... and the Solution

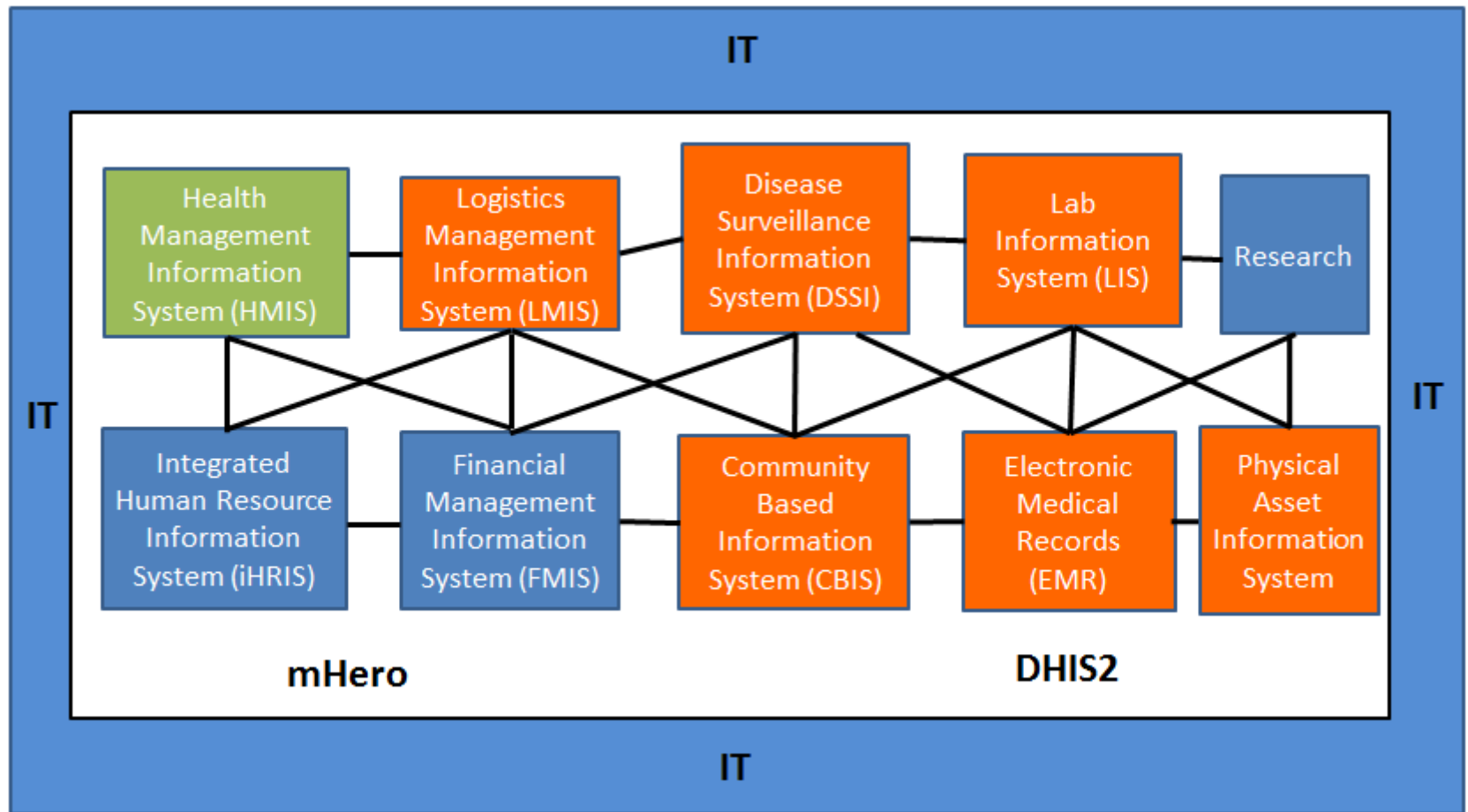
# Liberia: The State of Affairs



# Ebola Outbreak Data Flow



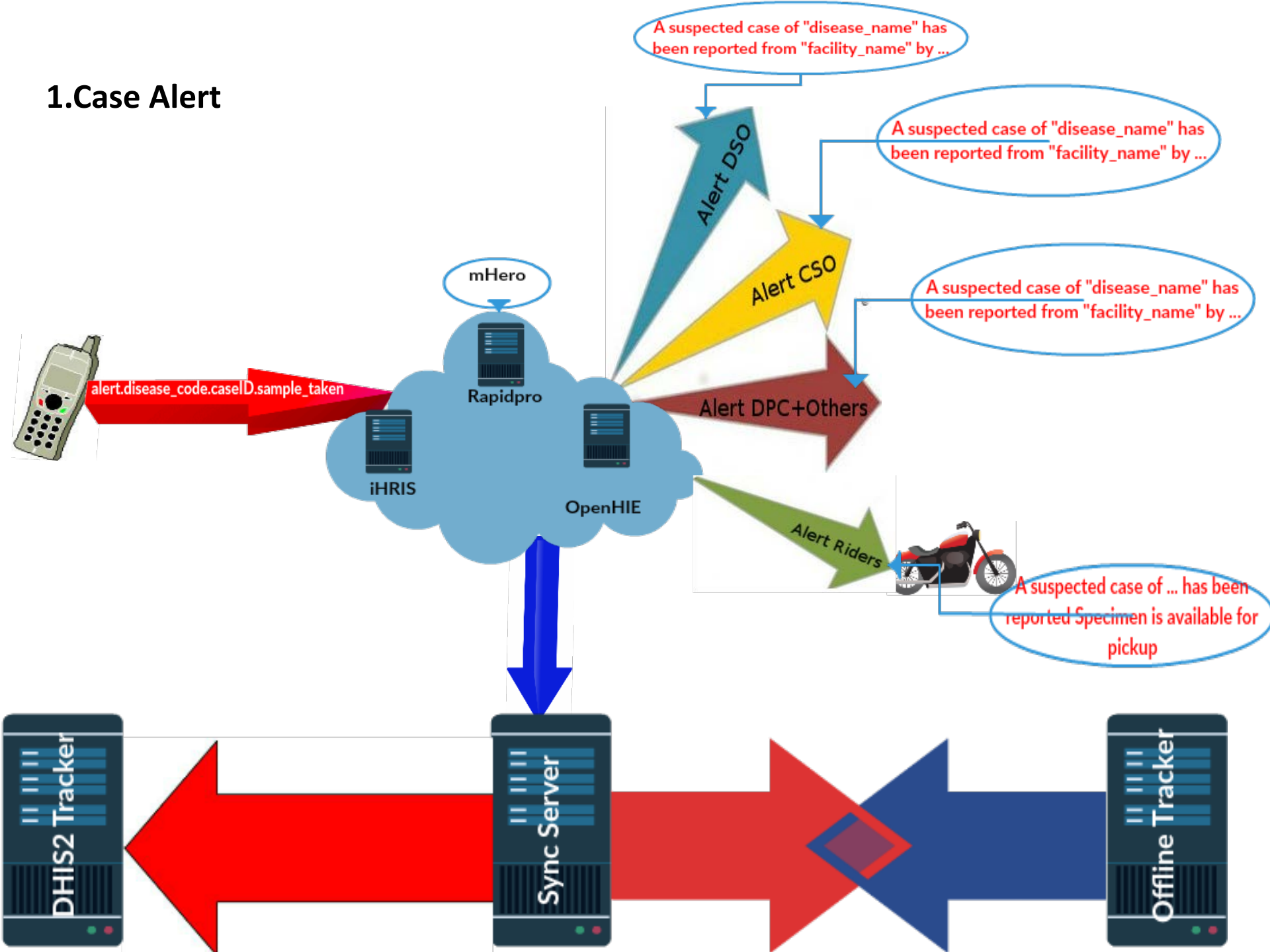
# Liberia HIS



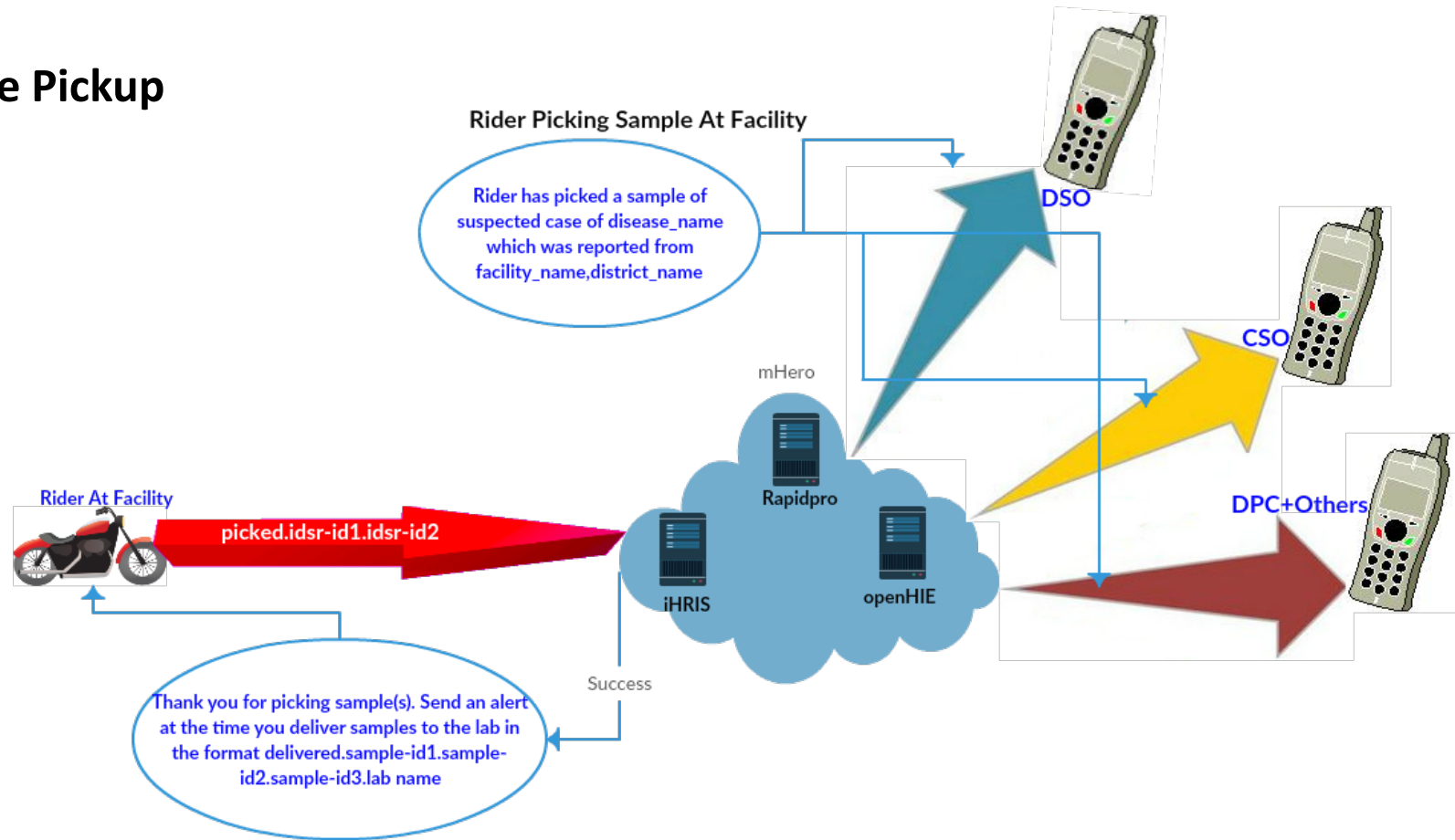


# eIDSR Use Cases

# 1.Case Alert



## 2.Sample Pickup



### KEY

HWR = Health Worker Registry

FR = Facility Registry

iHRIS = Integrated Human Resource Information System

mHero = Mobile Health Electronic Response And Outreach



### 3.Sample Pickup Relay Facility

Facility Not At Riders Route

Facility Not At Riders Route



Taking sample to Relay Facility

Relay Facility

pickup.idsrid



iHRIS

mHero



Rapidpro

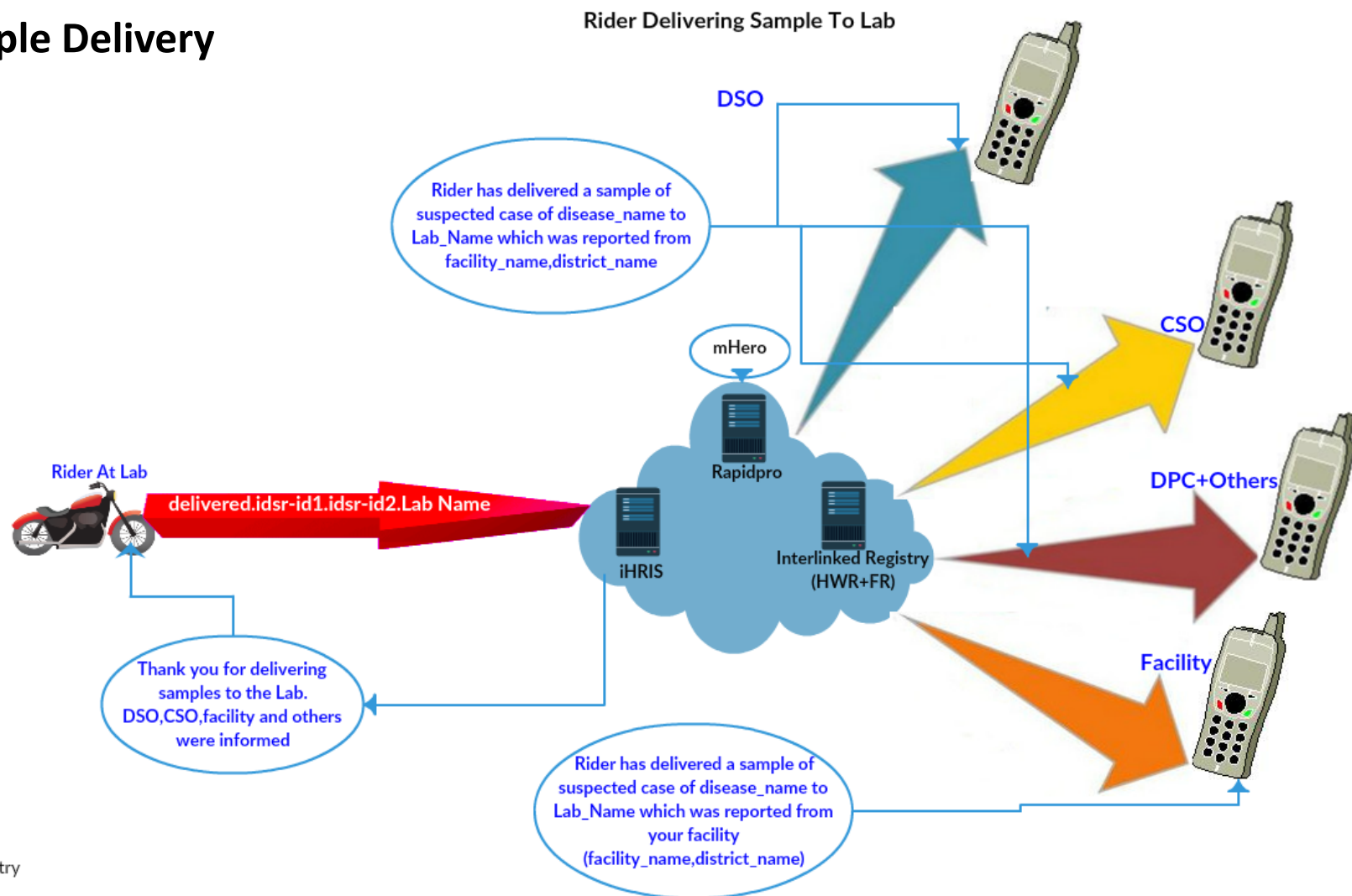


openHIE

There is a sample for pick up at "Relay facility Name". Please send a driver for pick up



## 4.Sample Delivery



### KEY

HWR = Health Worker Registry

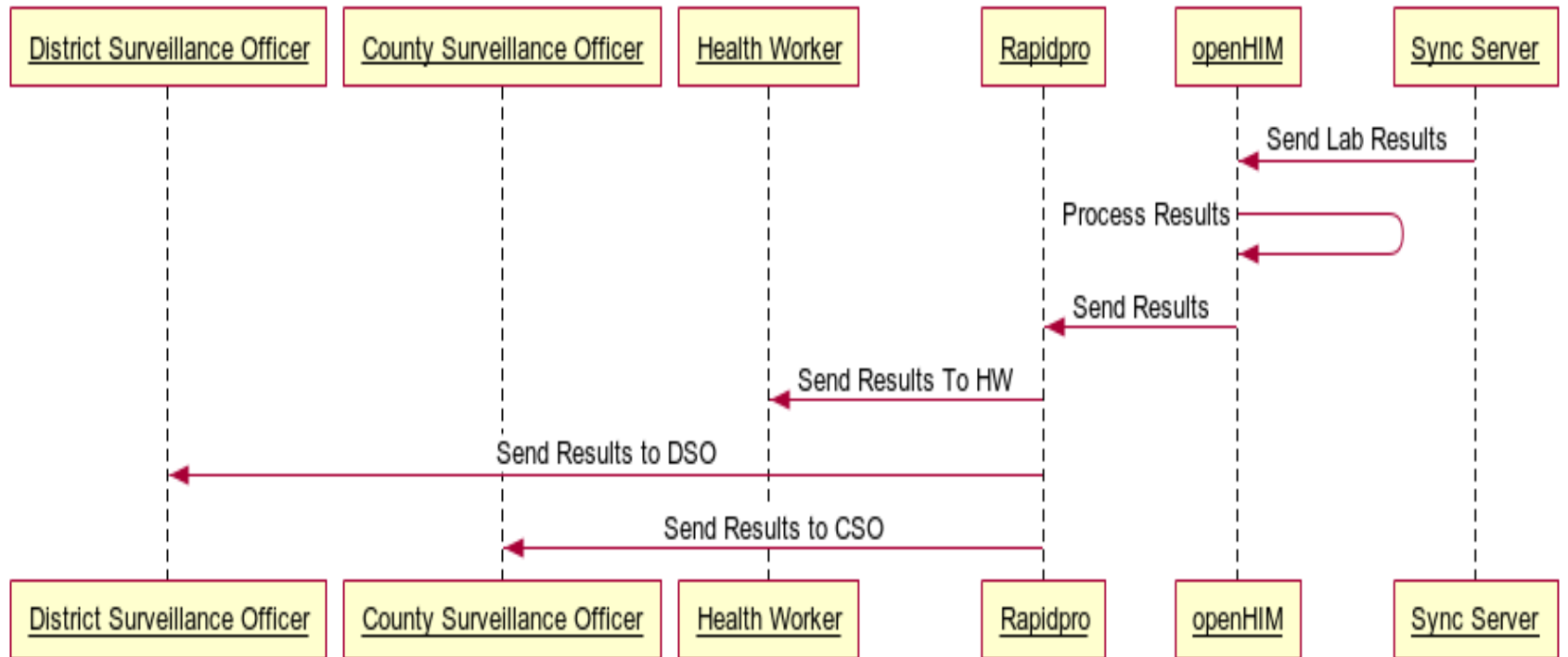
FR = Facility Registry

iHRIS = Integrated Human Resource Information System

mHero = Mobile Health Electronic Response And Outreach

## 5.Lab Results

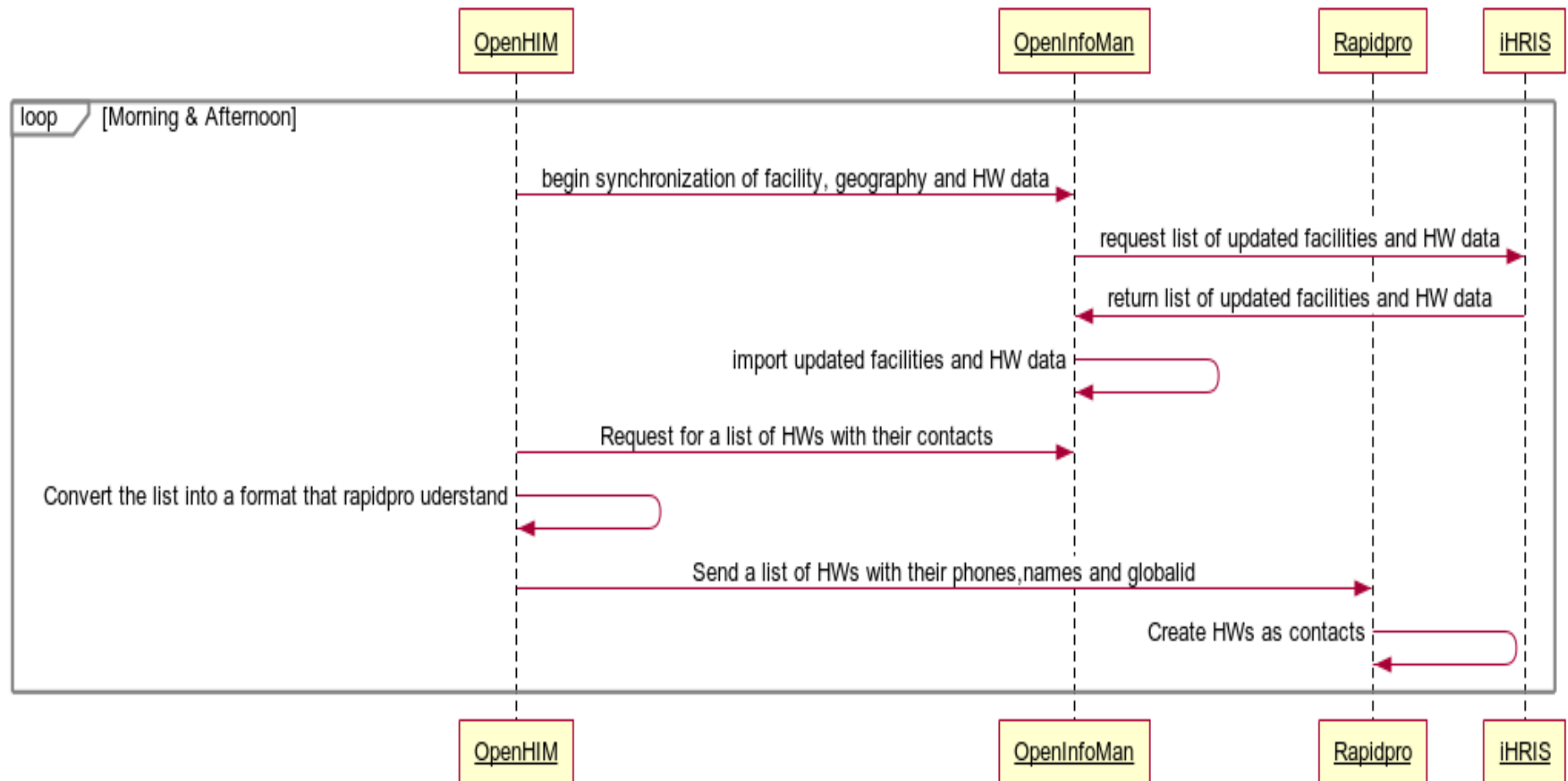
### Lab Results



# Deep Dive: eIDSR Back End Systems

# mHero Architecture

## iHRIS-OpenInfoMan-Rapidpro Sync



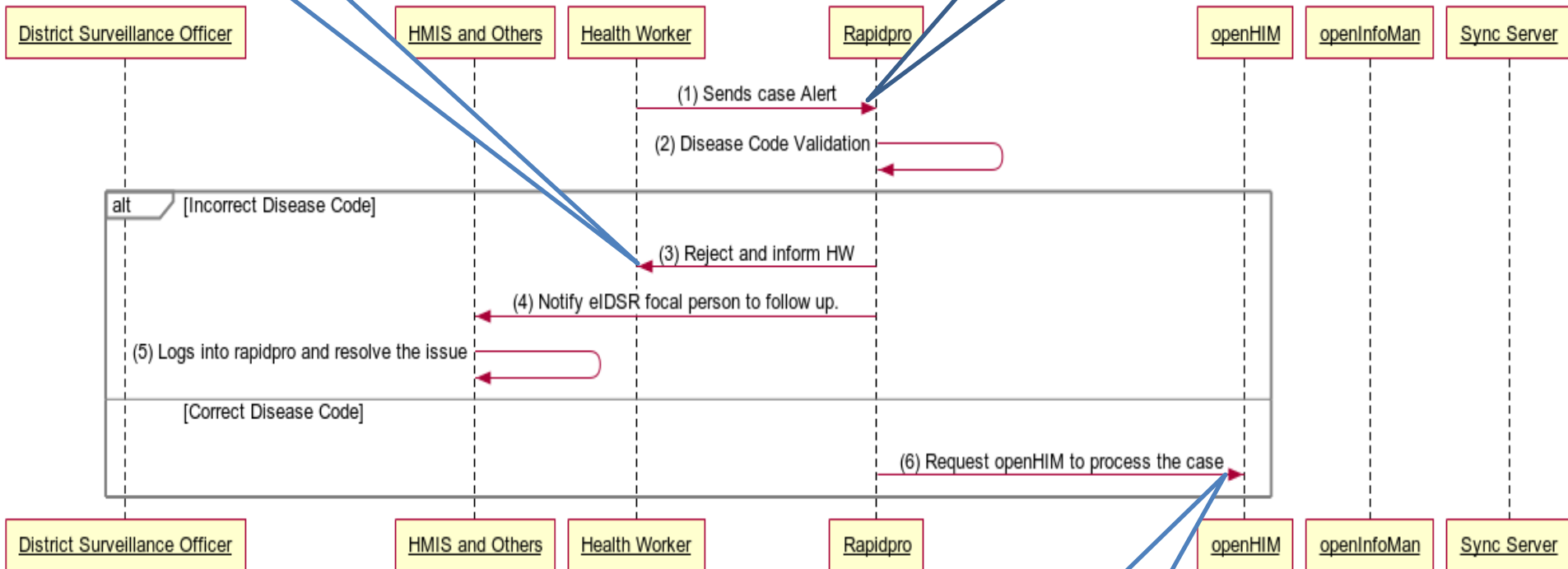


# How eIDSR Works + Flow of Information

The disease code you submitted was not recognized  
resend or contact your DSO

## eiDSR Case Alert

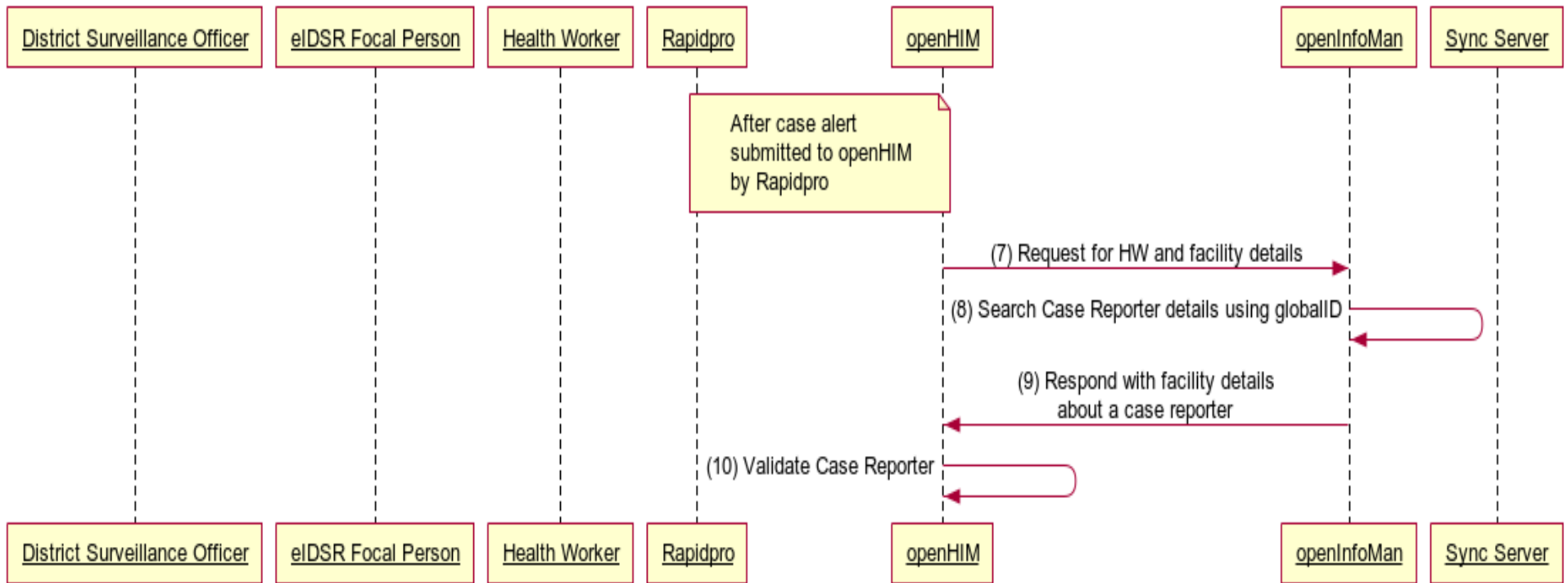
alert.lf.123.yes



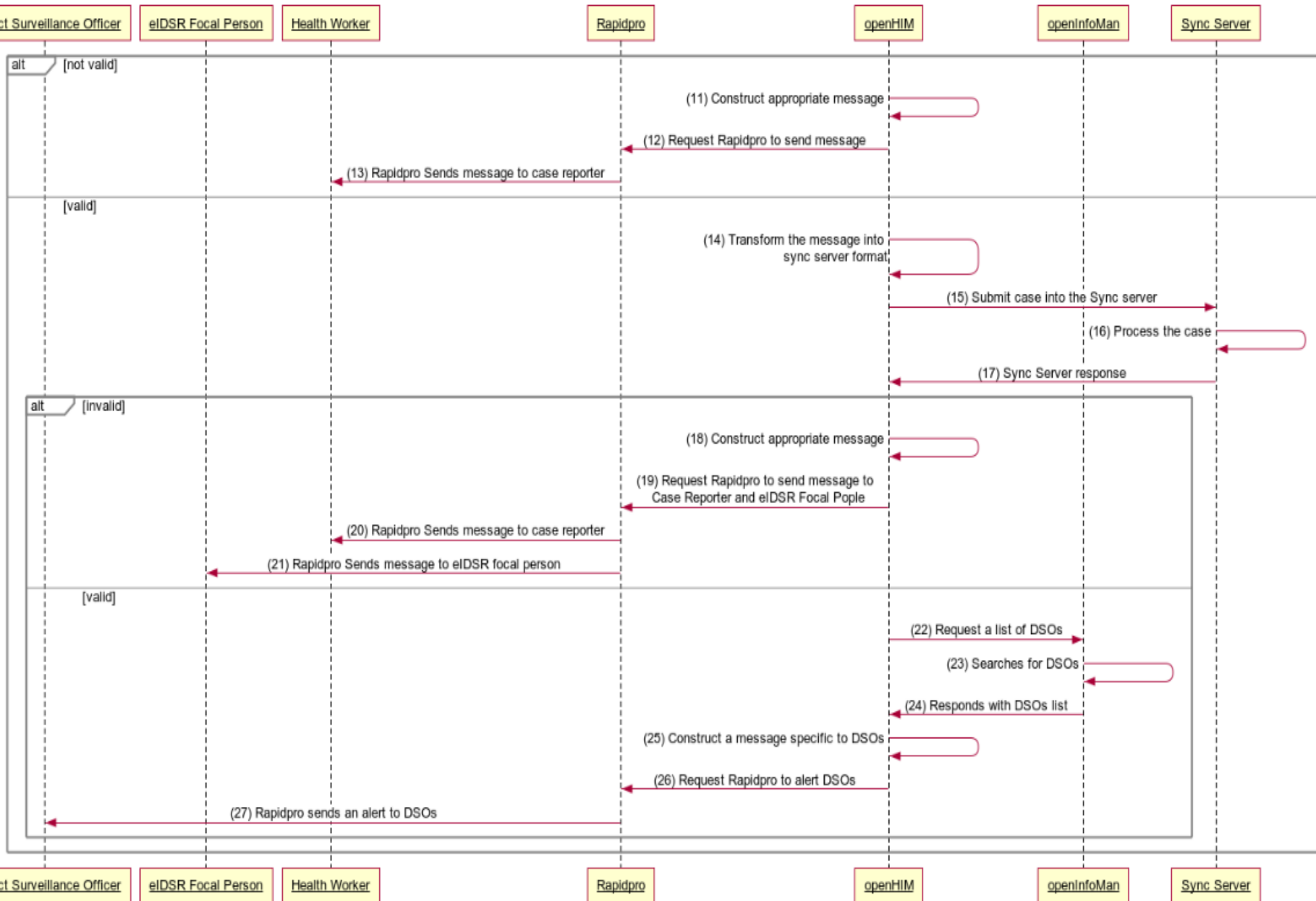
www.websequencediagrams.com

Disease code +  
globalid

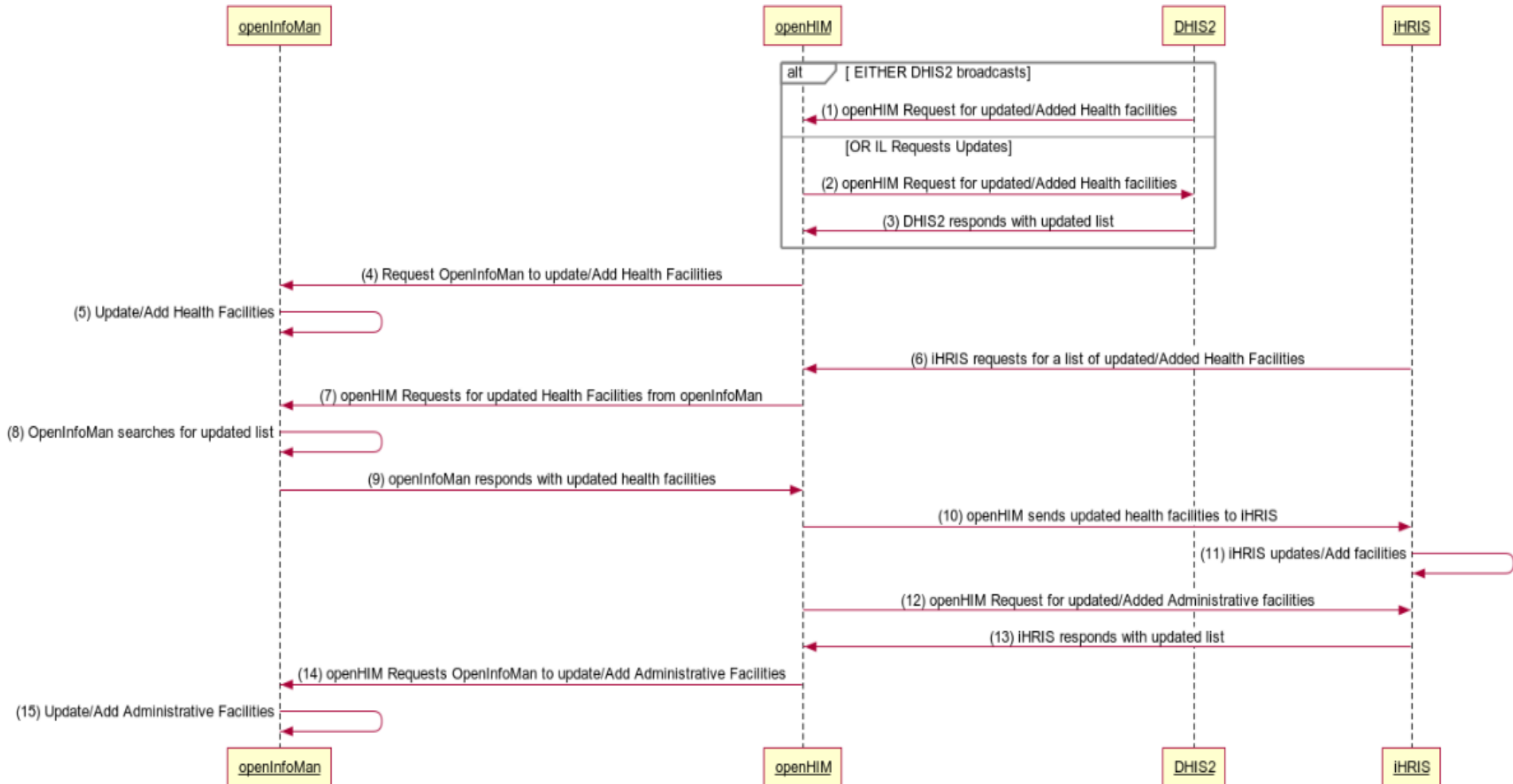
## eIDSR Case Alert



## eIDSR Case Alert



## iHRIS and DHIS2 Facility Sync





# Putting it All Together: The Human Side

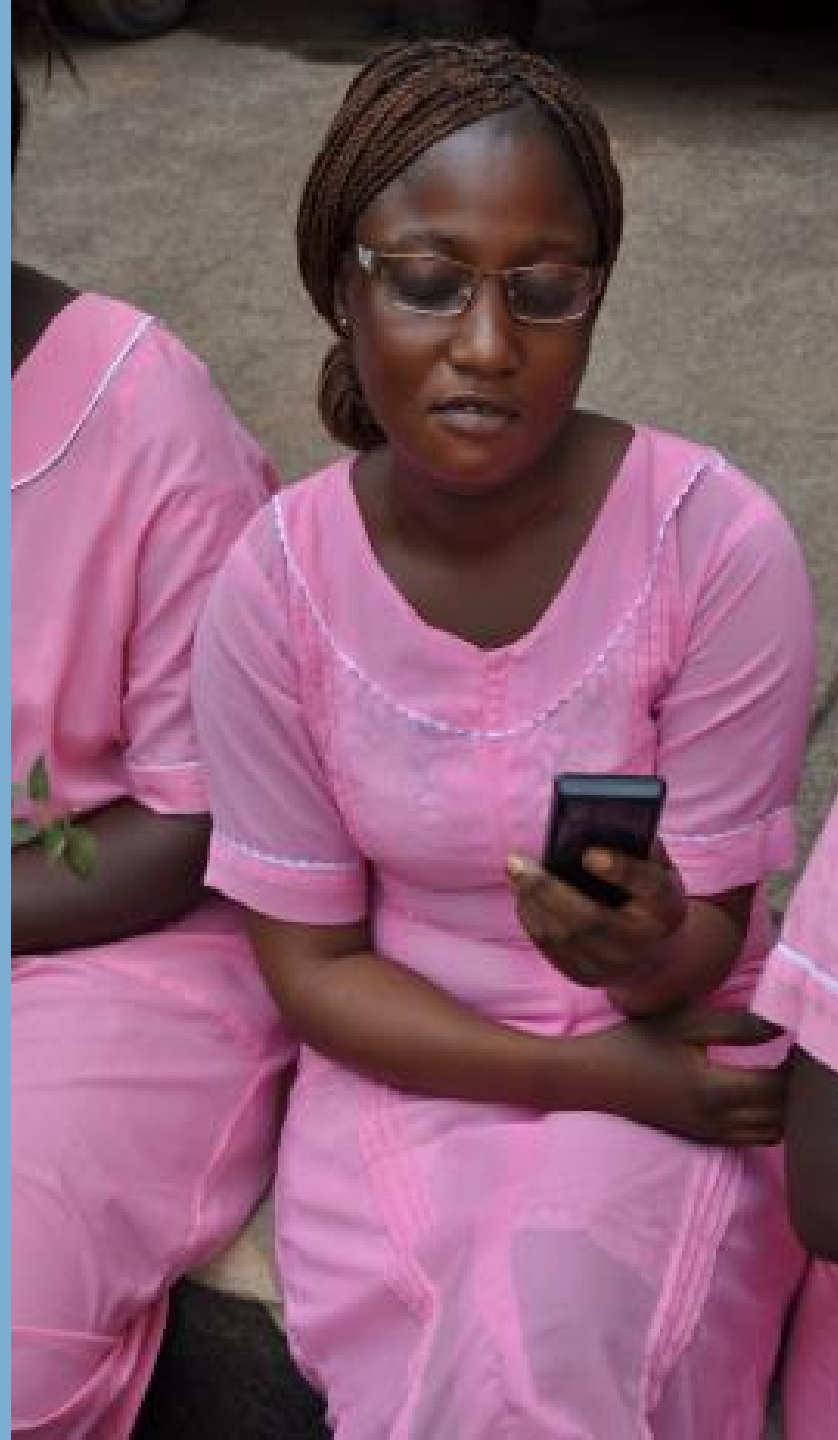
# eIDSR Development

Requirements  
Gathering

Technology  
Development

Virtual  
Teamwork

eIDSR TWG





**Building Capacity**

**Daily  
Management**

**Continuous  
Adaptation**





# Sustainability

Integration into HIS

Governance

Organizational  
Competencies

Decentralization

Ministry led  
Management and  
Maintenance

# Reflections and Next Steps



# Thank you!

ation is made possible by the generous support of the American people through the United States Agency for International Development (USAID). The contents are the responsibility of IntraHealth International and do not represent the views of USAID or the United States Government.